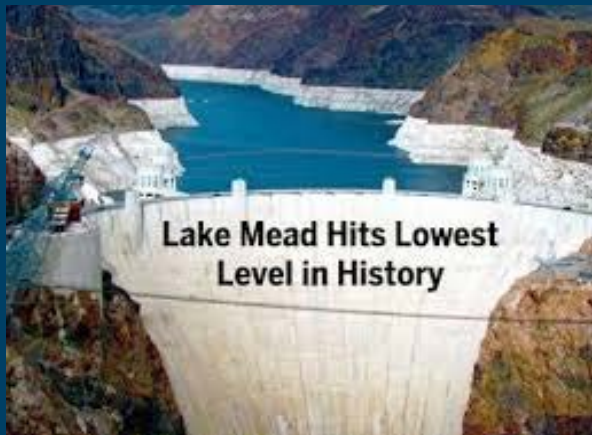


COLORADO RIVER BASIN UPDATE AND STATUS

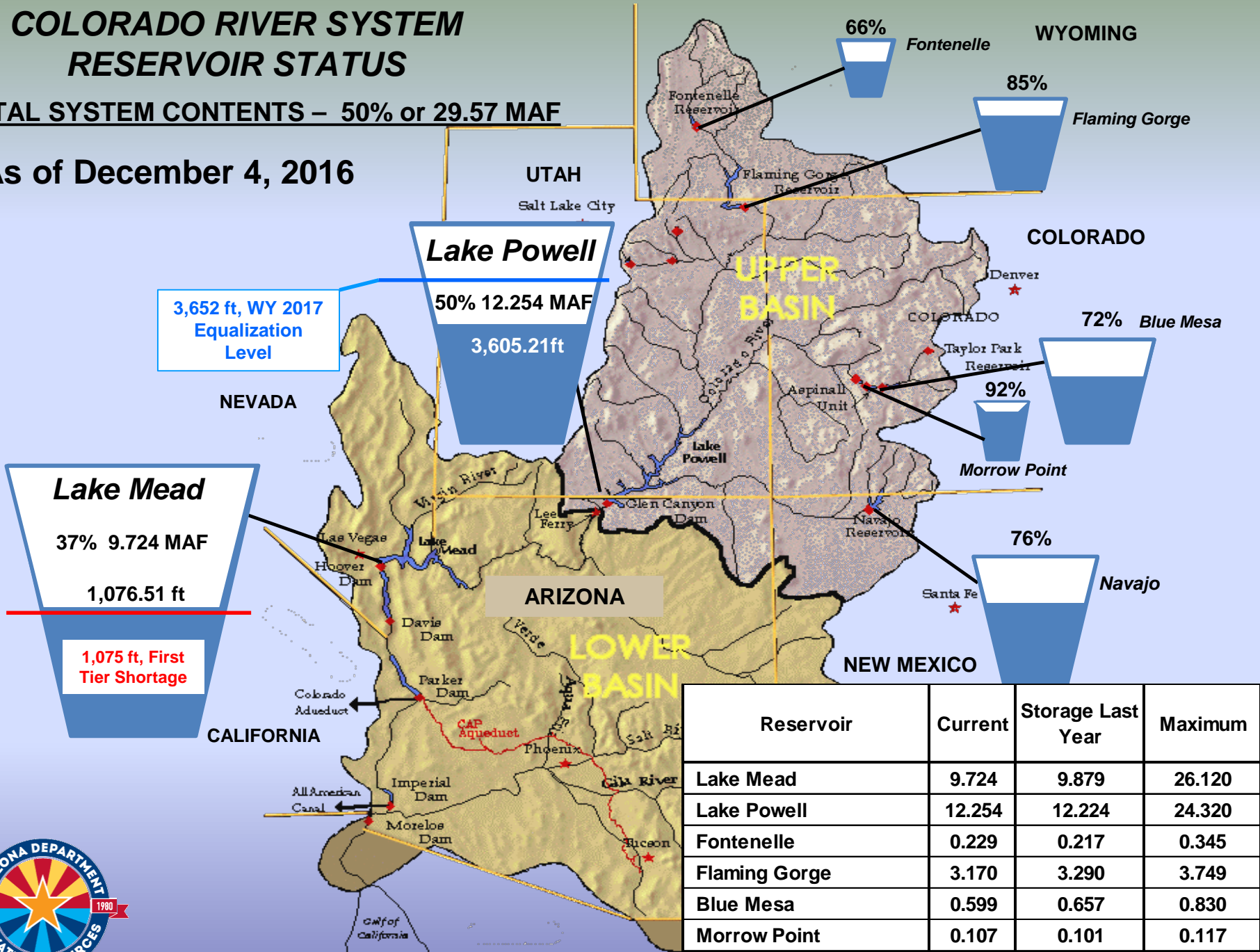
Presented to
Arizona Water Banking Authority
December 7, 2016



COLORADO RIVER SYSTEM RESERVOIR STATUS

TOTAL SYSTEM CONTENTS – 50% or 29.57 MAF

As of December 4, 2016



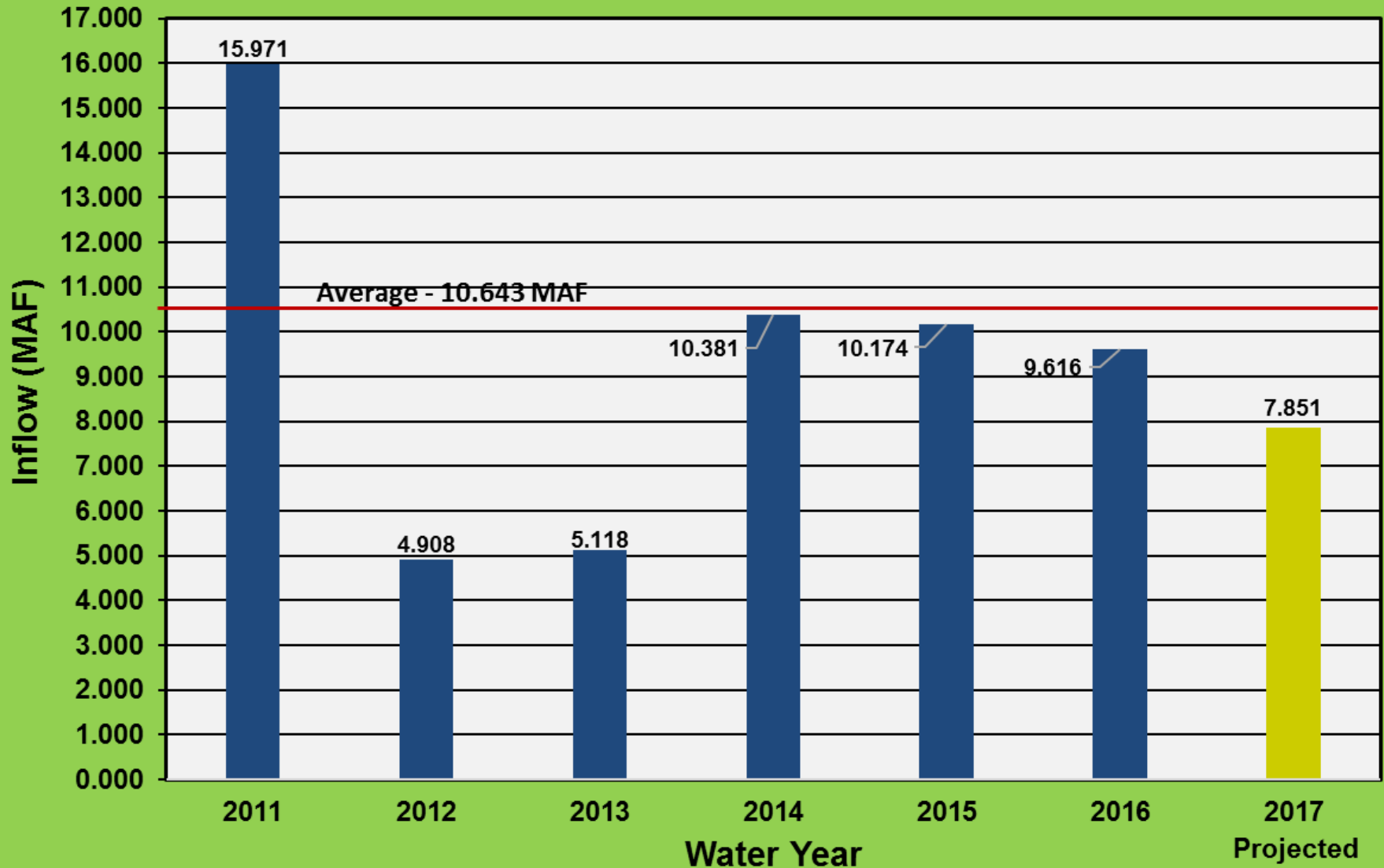
Reservoir	Current	Storage Last Year	Maximum
Lake Mead	9.724	9.879	26.120
Lake Powell	12.254	12.224	24.320
Fontenelle	0.229	0.217	0.345
Flaming Gorge	3.170	3.290	3.749
Blue Mesa	0.599	0.657	0.830
Morrow Point	0.107	0.101	0.117
Navajo	1.300	1.400	1.700



Source: United States Bureau of Reclamation

Unregulated Inflow WY 2011 - 2017

Unregulated Inflow into Lake Powell

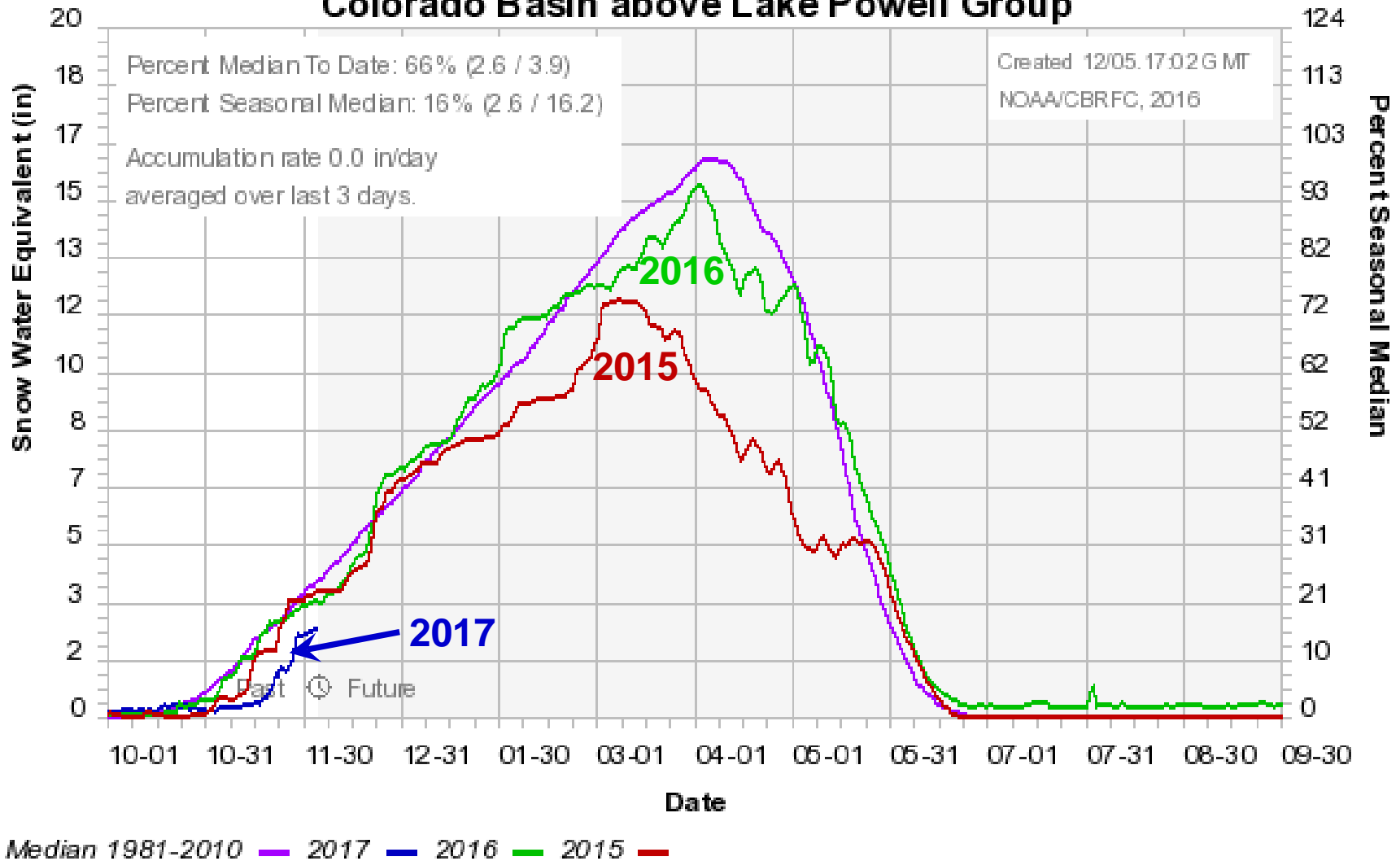


Source: United States Bureau of Reclamation



UPPER COLORADO RIVER BASIN SNOWPACK

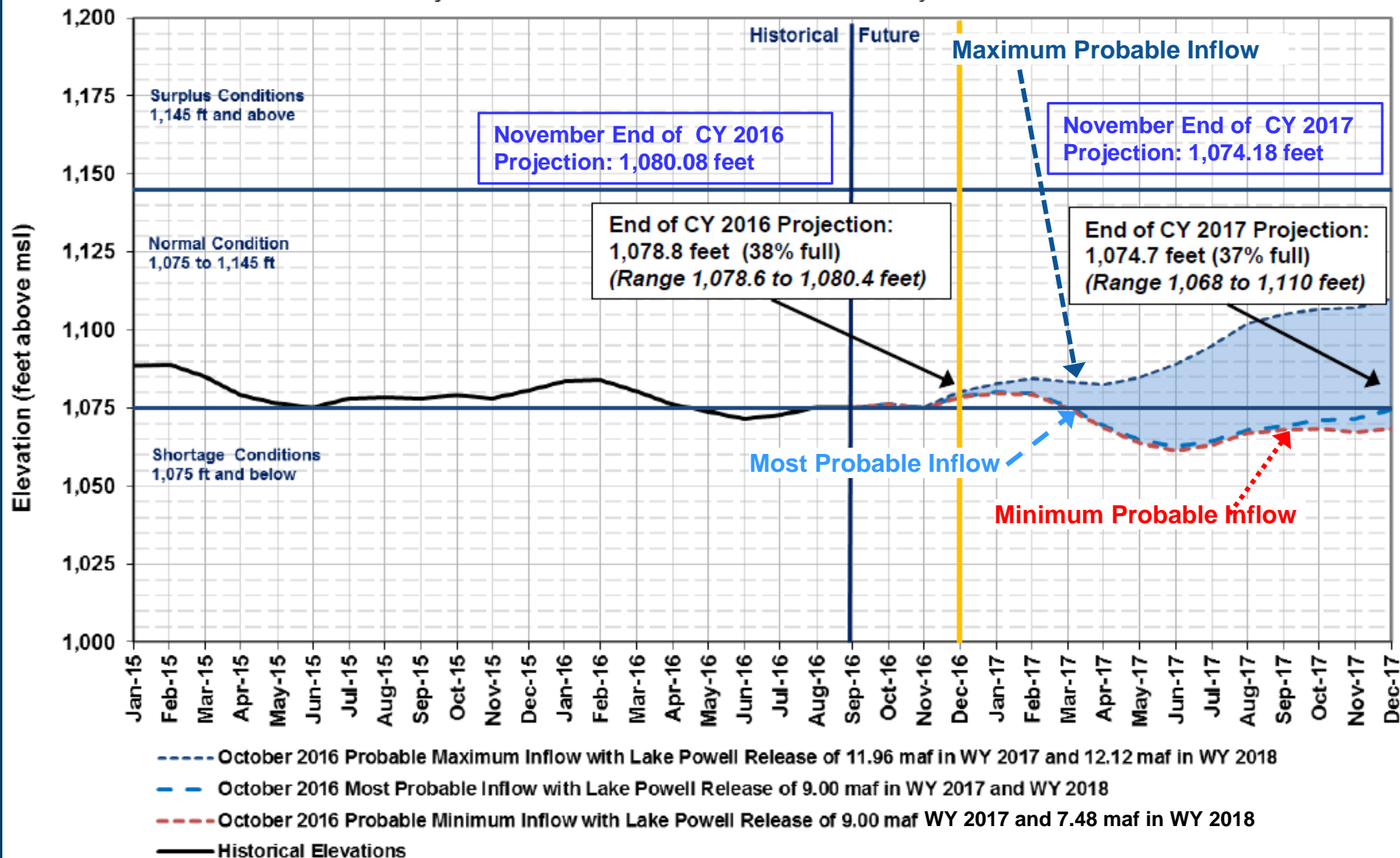
Colorado Basin River Forecast Center Colorado Basin above Lake Powell Group



LAKE MEAD END OF ON MONTH ELEVATIONS

October and November 2016 24-Month Study Projection

Lake Mead End of Month Elevations
 Projections from October 2016 24-Month Study Inflow Scenarios



Probabilities of Lower Colorado River Basin Shortage

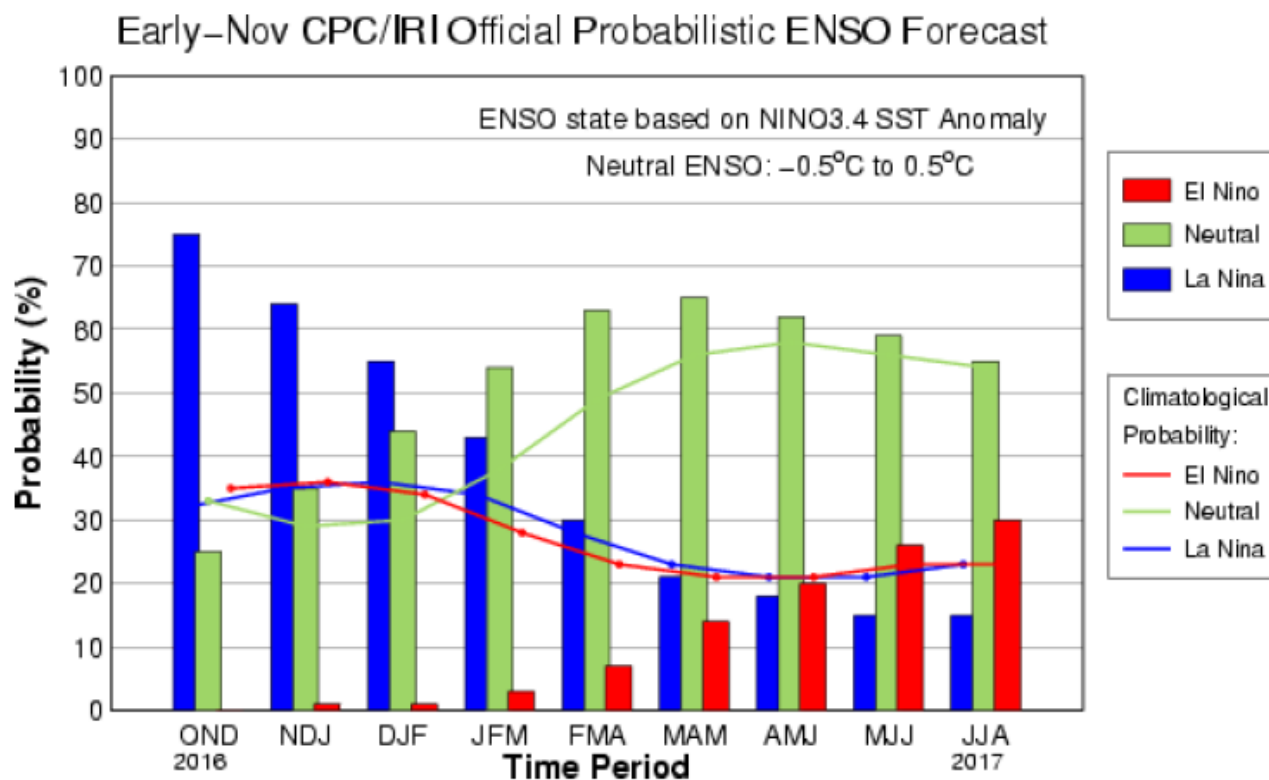
U.S. Bureau of Reclamation CRSS Model Run – August 2016

	2017	2018	2019	2020	2021
Probability of any level of shortage (Mead \leq 1,075 ft.)	0	48	60	60	56
1 st level shortage (Mead \leq 1,075 and \geq 1,050 ft)	0	48	50	41	33
2 nd level shortage (Mead $<$ 1,050 and \geq 1,025 ft)	0	0	10	16	16
3 rd level shortage (Mead $<$ 1,025)	0	0	0	3	7

Source: Bureau of Reclamation Results from the August 2016 CRSS model run.

EL NINO– LA NINA FORECAST

La Niña is slightly favored to persist (~55% chance) through the winter 2016-17.

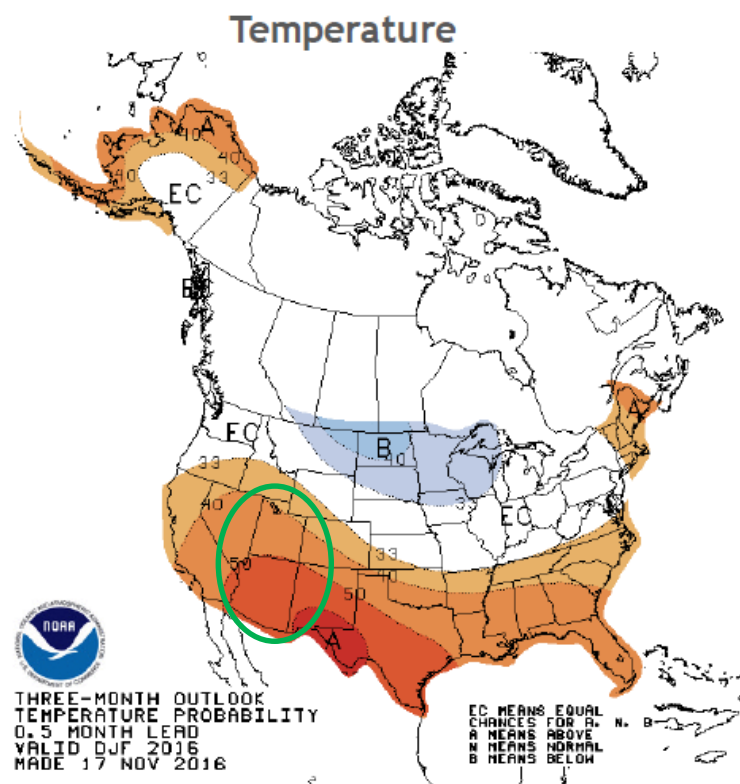
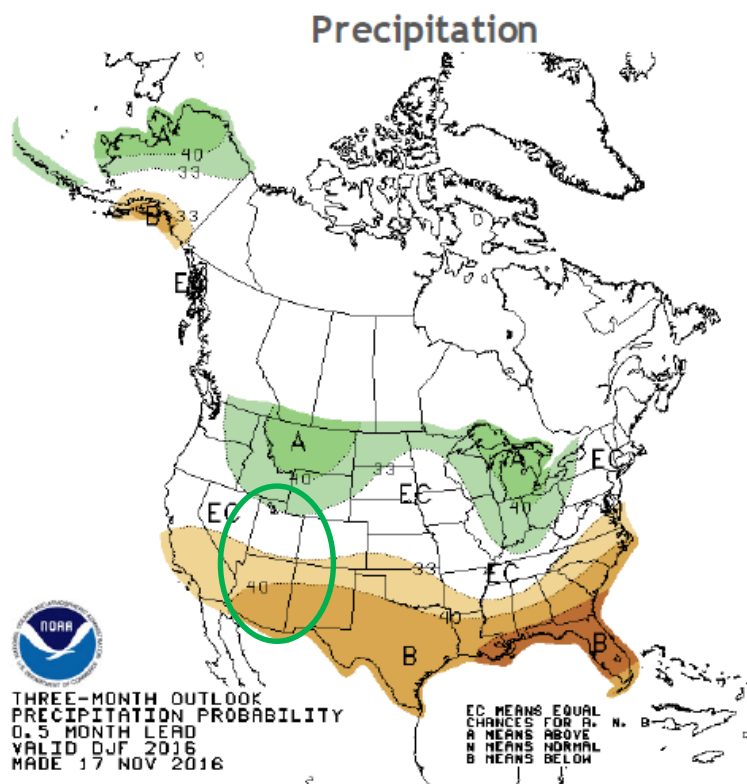


THREE MONTH OUTLOOK

U. S. Seasonal Outlooks

December 2016 - February 2017

The seasonal outlooks combine the effects of long-term trends, soil moisture, and, when appropriate, ENSO.



COLORADO RIVER BASIN UPDATE AND STATUS

QUESTIONS ?????

