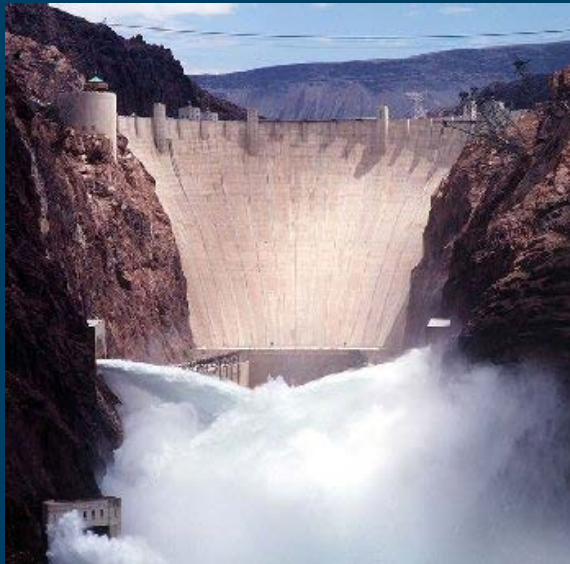


# ***COLORADO RIVER BASIN UPDATE AND STATUS***

Presented to

**Arizona Water Banking Authority  
September 20, 2017**



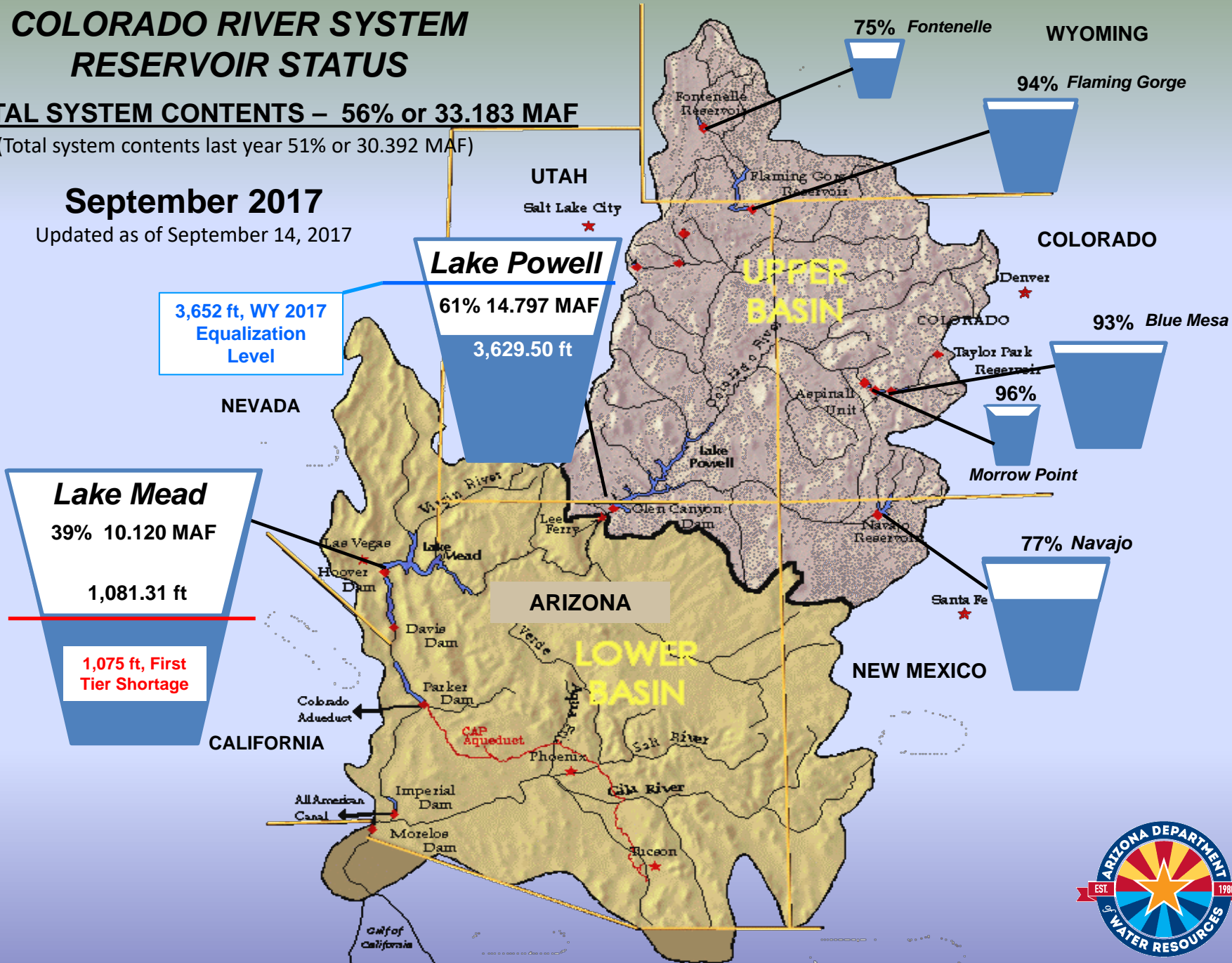
# COLORADO RIVER SYSTEM RESERVOIR STATUS

**TOTAL SYSTEM CONTENTS – 56% or 33.183 MAF**

(Total system contents last year 51% or 30.392 MAF)

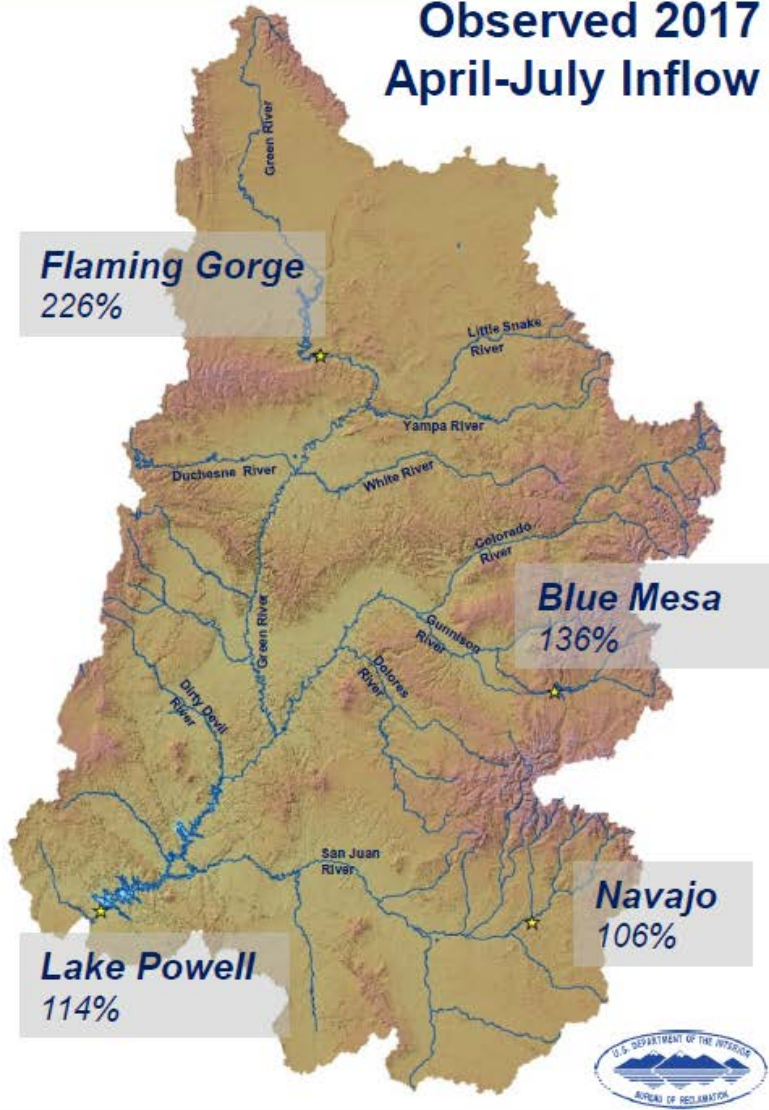
**September 2017**

Updated as of September 14, 2017



# CBRFC Unregulated Inflow Forecast dated September 1, 2017

## Observed 2017 April-July Inflow

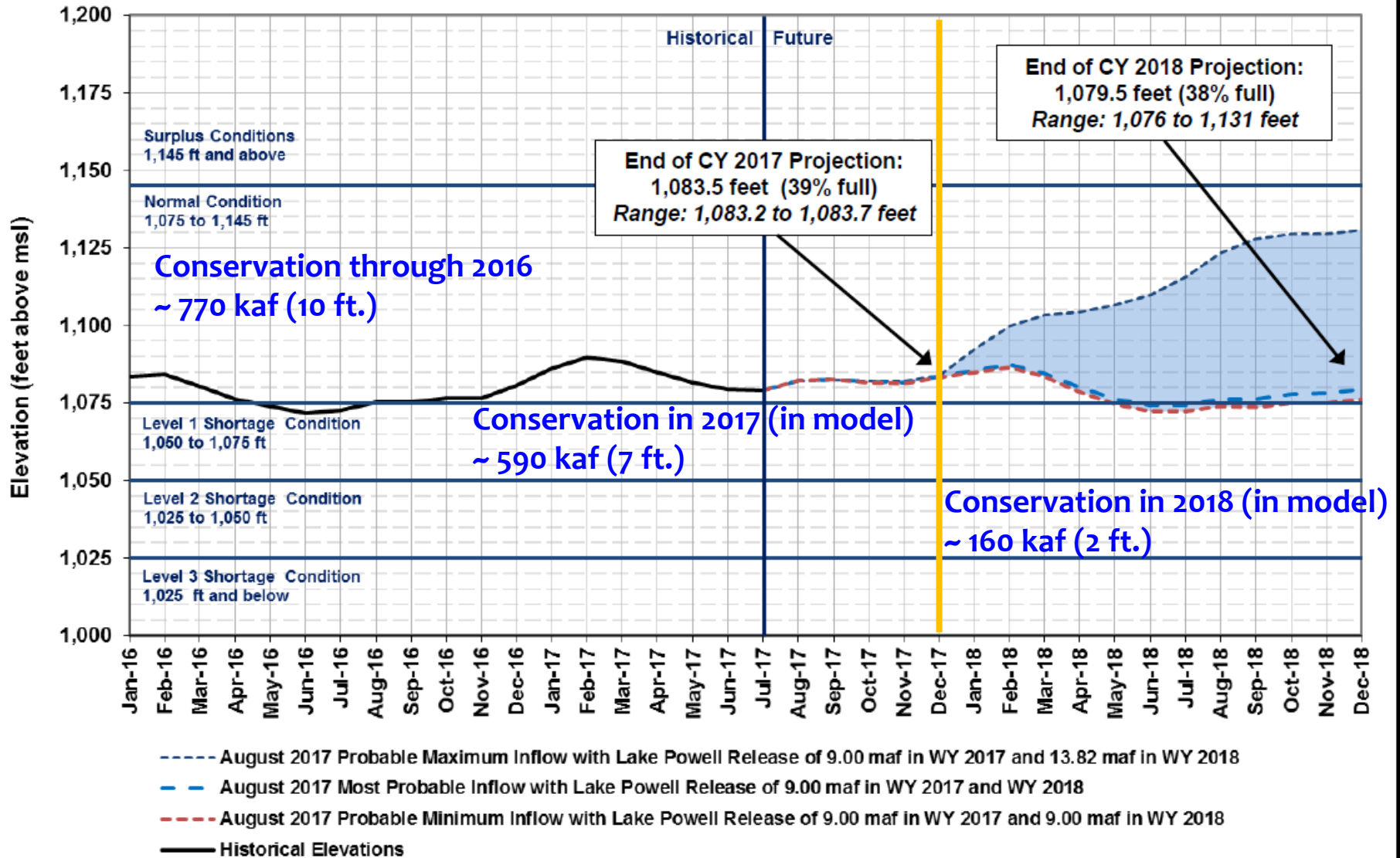


Month/Period	Inflow (KAF)	Percent of Average
Aug 2017 (observed)	446	89
Sep 2017	360	88
Oct 2017	510	100
Nov 2017	490	104
2017 April-July (observed)	8,173	114
WY 2017	12,069	111

# RECLAMATION

# Lake Mead End of Month Elevations

Projections from the August 2017 24-Month Study Inflow Scenarios



# Projected Lake Mead Operational Tiers

Based on August 2017 24-Month Study Inflow Scenarios

<b>Powell Inflow Scenario</b>	<b>CY 2018</b> Jan 1, 2018 Projection	<b>CY 2019</b> Jan 1, 2019 Projections
Probable Maximum	Normal - ICS Surplus Condition Elevation 1,083.46 ft	Normal - ICS Surplus Condition Elevation 1,130.89 ft
Most Probable		Normal - ICS Surplus Condition Elevation 1,079.47 ft
Probable Minimum		Normal - ICS Surplus Condition Elevation 1,076.11 ft

# Probabilities of Lower Colorado River Basin Shortage

## U.S. Bureau of Reclamation MTOM/CRSS Model Run – April 2017

	2018	2019	2020	2021	2022
<b>Probability of any level of shortage (Mead <math>\leq</math> 1,075 ft.)</b>	<b>N</b>	<b>31</b>	<b>32</b>	<b>34</b>	<b>39</b>
1 <sup>st</sup> level shortage (Mead $\leq$ 1,075 and $\geq$ 1,050 ft)	0	31	31	26	27
2 <sup>nd</sup> level shortage (Mead $<$ 1,050 and $\geq$ 1,025 ft)	0	0	1	8	9
3 <sup>rd</sup> level shortage (Mead $<$ 1,025)	0	0	0	$<$ 1	3

## U.S. Bureau of Reclamation CRSS Model Run – August 2017

	2018	2019	2020	2021	2022
<b>Probability of any level of shortage (Mead <math>\leq</math> 1,075 ft.)</b>	<b>0</b>	<b>15</b>	<b>42</b>	<b>45</b>	<b>52</b>
1 <sup>st</sup> level shortage (Mead $\leq$ 1,075 and $\geq$ 1,050 ft)	0	15	40	35	33
2 <sup>nd</sup> level shortage (Mead $<$ 1,050 and $\geq$ 1,025 ft)	0	0	2	10	15
3 <sup>rd</sup> level shortage (Mead $<$ 1,025)	0	0	0	1	5

**N = Negligible**