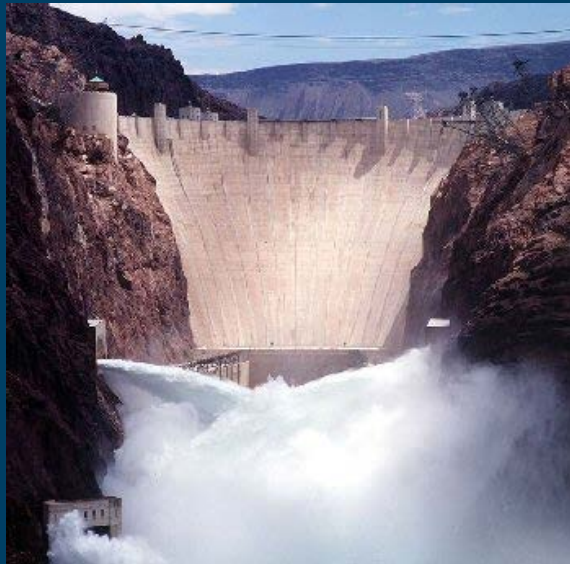


# ***COLORADO RIVER BASIN UPDATE AND STATUS***

Presented to  
**Arizona Water Banking Authority**  
**November 30, 2017**

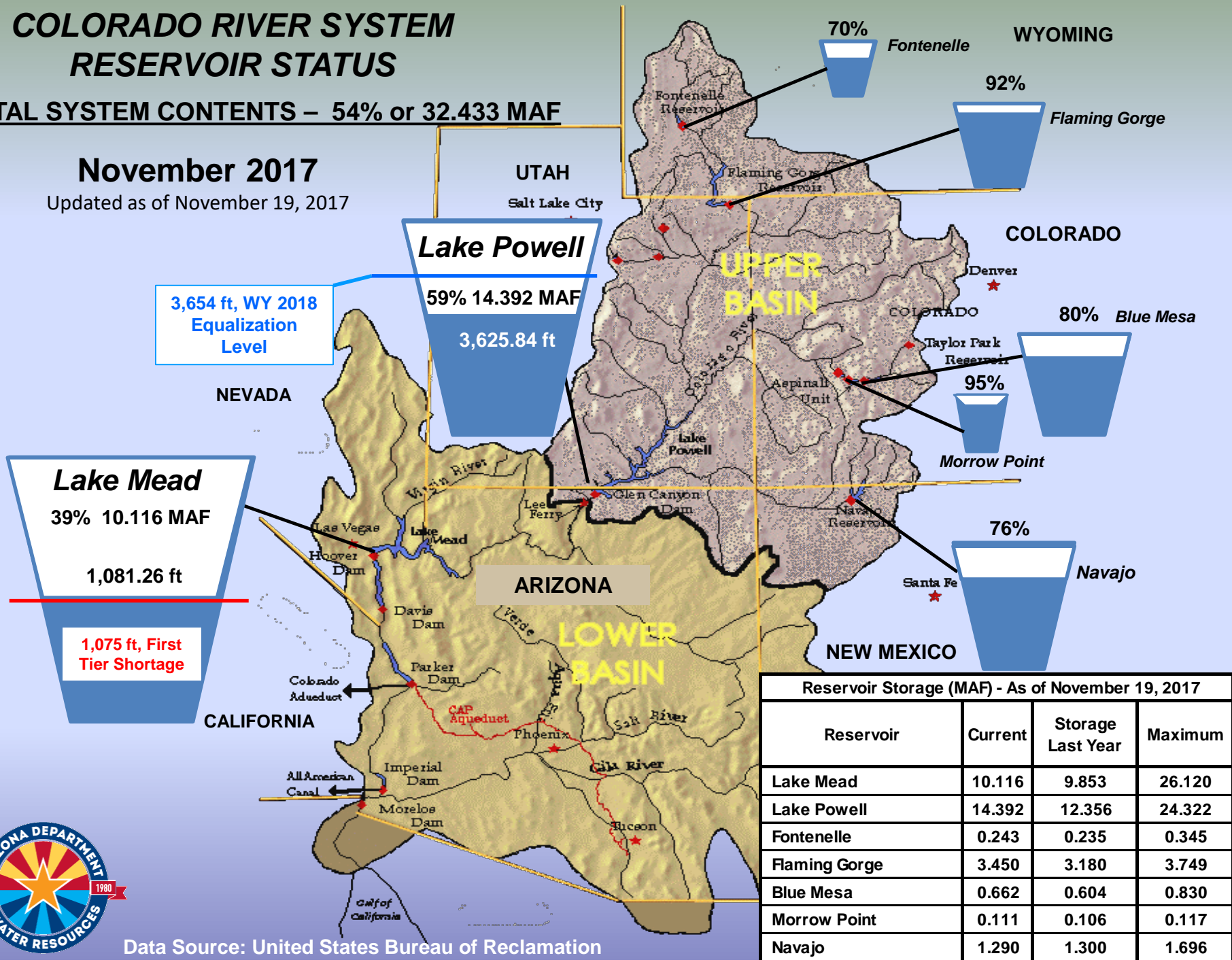


# COLORADO RIVER SYSTEM RESERVOIR STATUS

**TOTAL SYSTEM CONTENTS – 54% or 32.433 MAF**

**November 2017**

Updated as of November 19, 2017

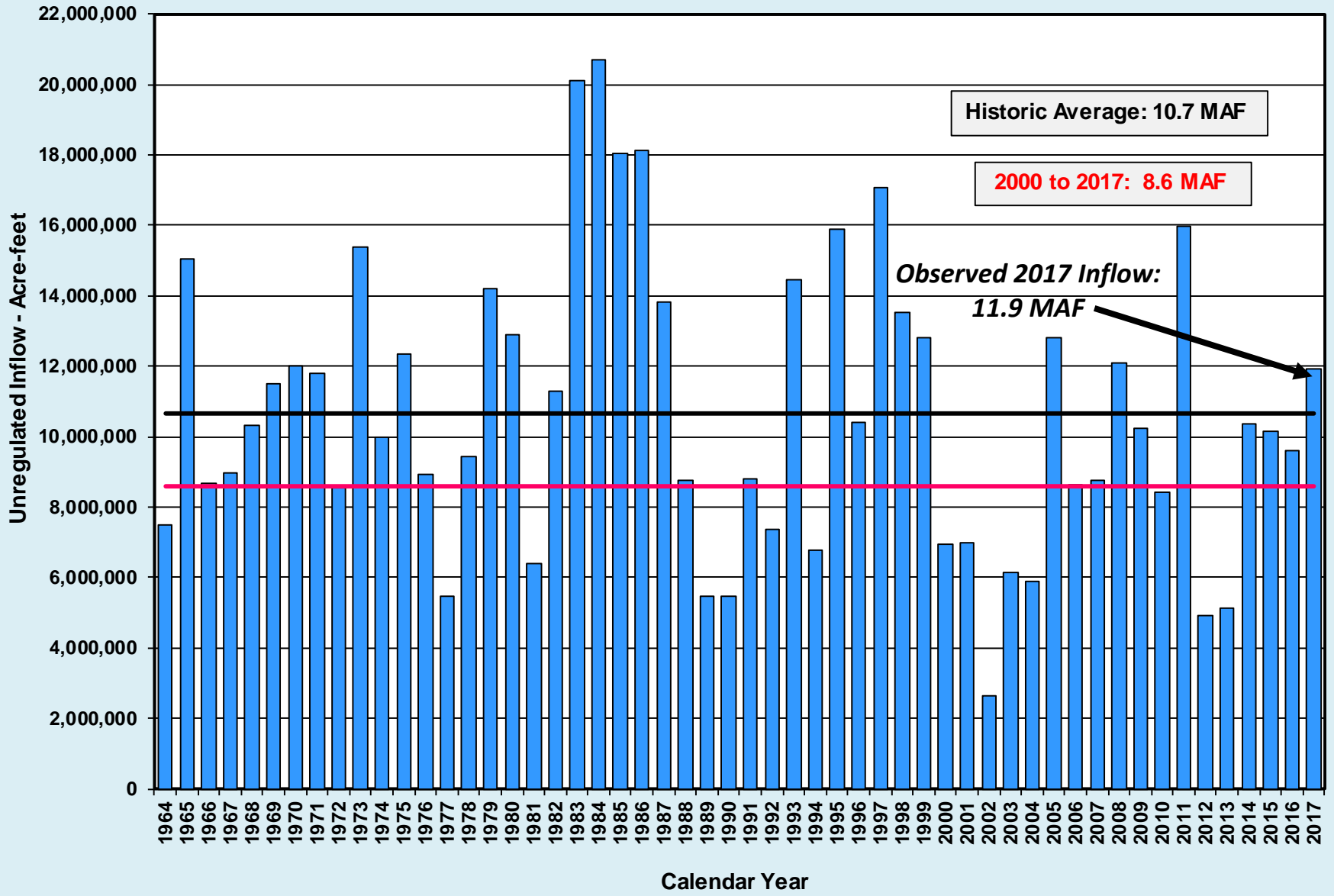


Reservoir Storage (MAF) - As of November 19, 2017			
Reservoir	Current	Storage Last Year	Maximum
Lake Mead	10.116	9.853	26.120
Lake Powell	14.392	12.356	24.322
Fontenelle	0.243	0.235	0.345
Flaming Gorge	3.450	3.180	3.749
Blue Mesa	0.662	0.604	0.830
Morrow Point	0.111	0.106	0.117
Navajo	1.290	1.300	1.696

Data Source: United States Bureau of Reclamation



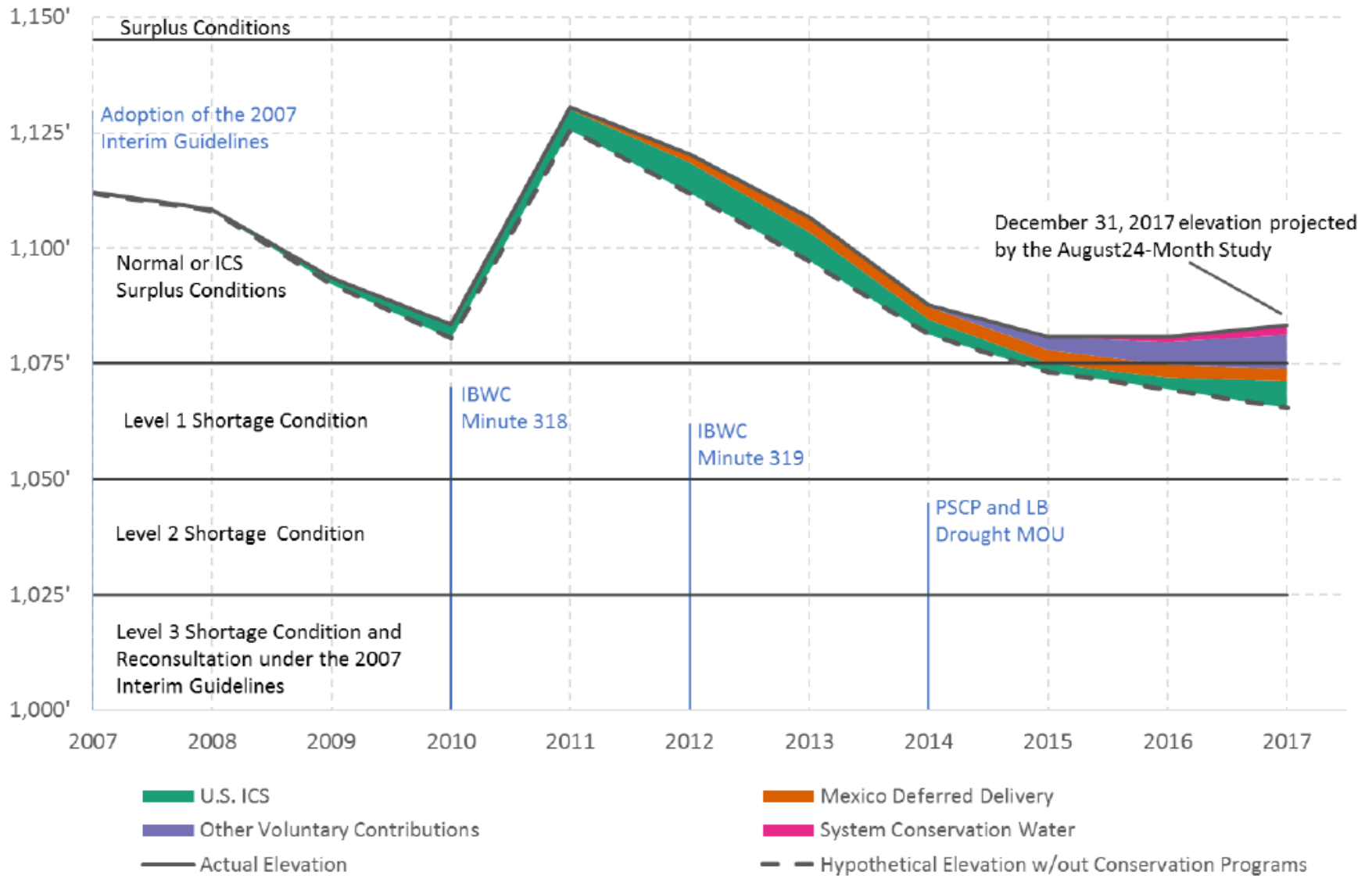
## Lake Powell Unregulated Water Year Inflow 1964 to 2017



Source: Colorado Basin River Forecast Center



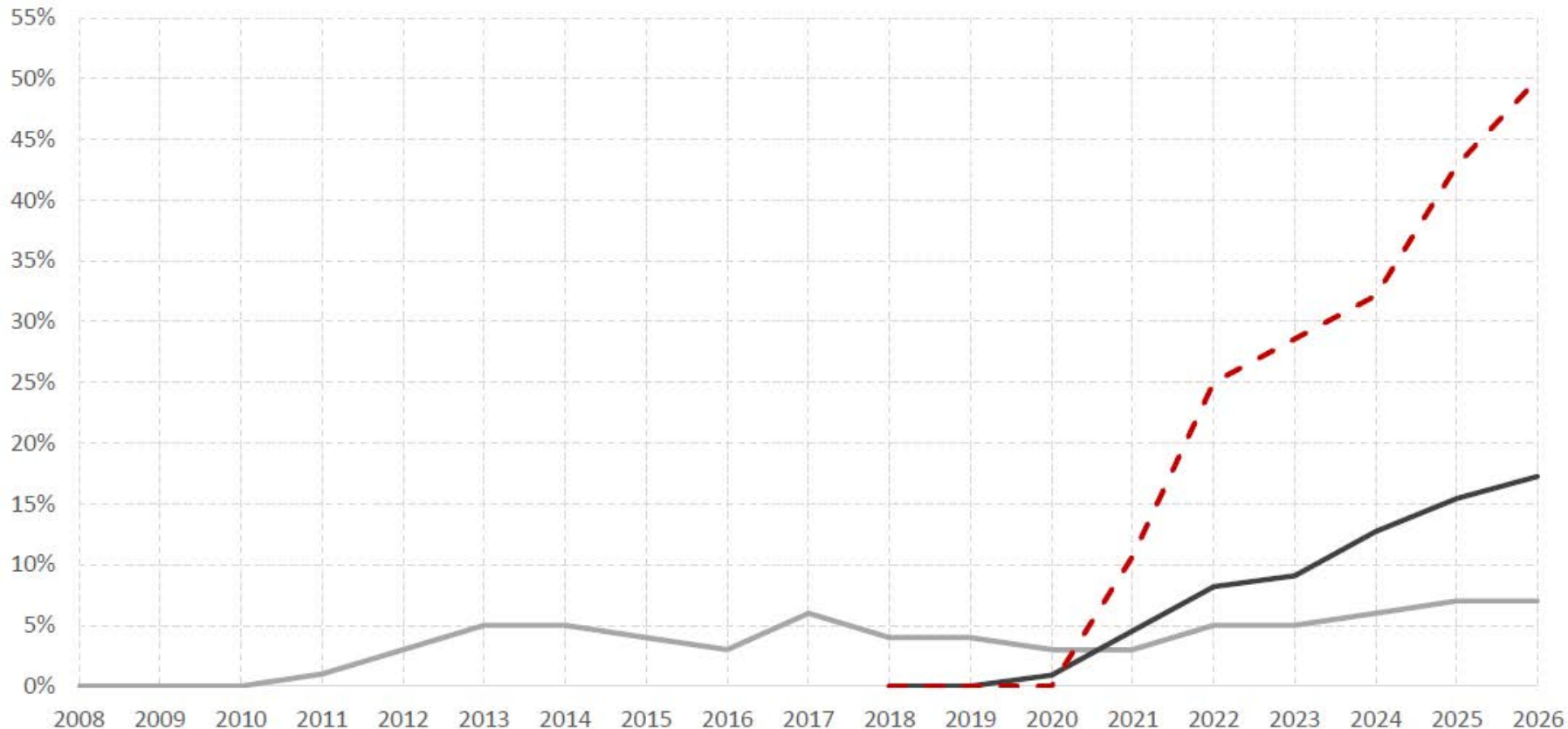
## Lake Mead End-of-December Elevation



\* End of calendar year 2017 balances of U.S. ICS and Mexico deferred delivery, system conservation water, and other voluntary contributions to Lake Mead reflect plans as of August 2017 and are subject to change

# RECLAMATION

# Risk of Lake Mead Reaching Critically Low Elevations (1,025')



- Risk as assessed when 2007 Interim Guidelines were adopted
- Comparative current risk assessment as of August 2017 based on full historical hydrologic record
- - Adjusted current risk assessment as of August 2017 based on the last 28 years of historical hydrology (i.e., assuming last 28 years are representative of future hydrology)

# QUESTIONS ?????

Jeff Inwood  
[jinwood@azwater.gov](mailto:jinwood@azwater.gov)

