

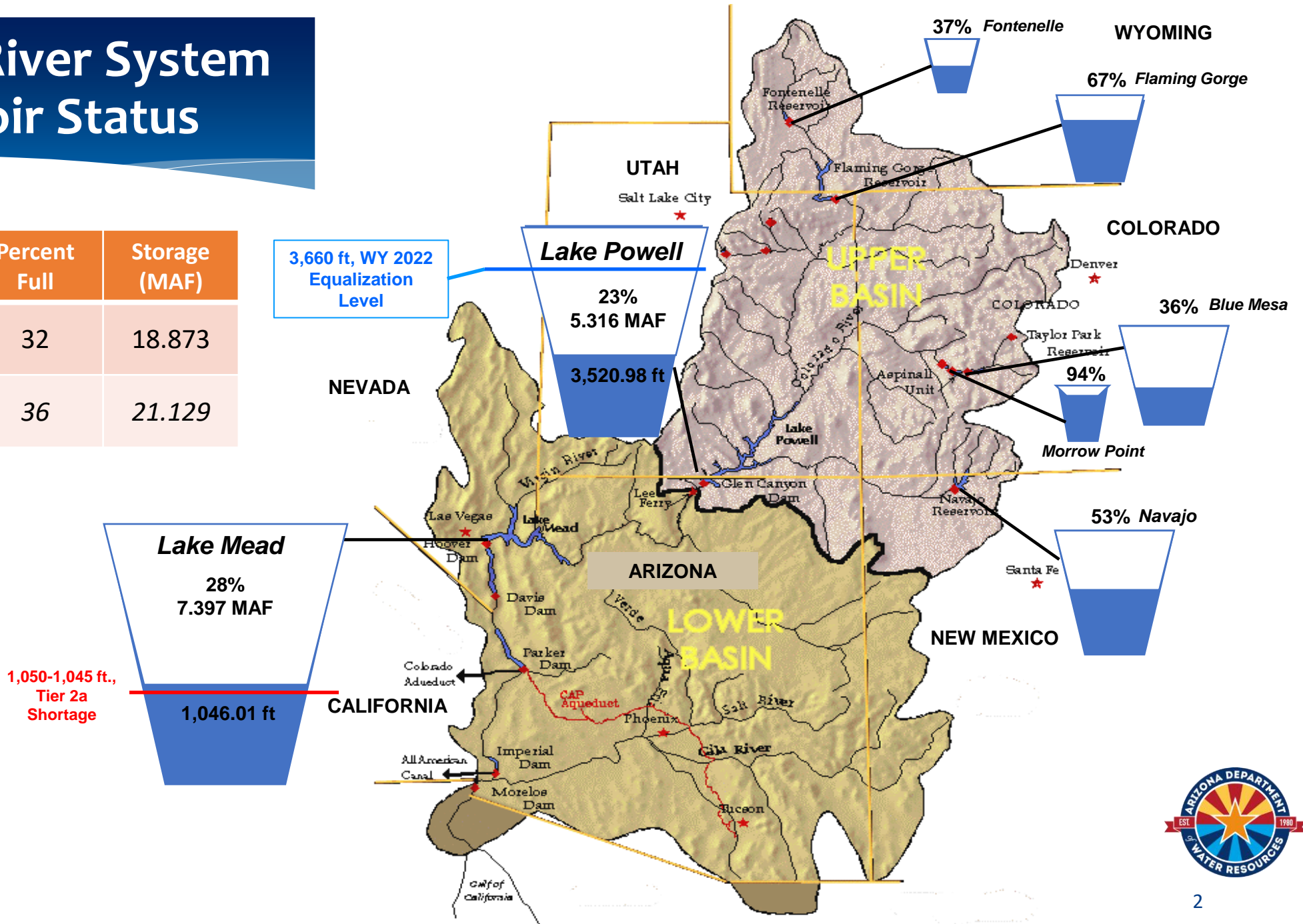
Arizona Water Banking Authority: Quarterly Meeting



*Kristen Johnson
Manager, Colorado River Programs
Arizona Department of Water Resources
March 22, 2023*

Colorado River System Reservoir Status

	Percent Full	Storage (MAF)
Total System Storage	32	18.873
Total System Storage (this time last year)	36	21.129



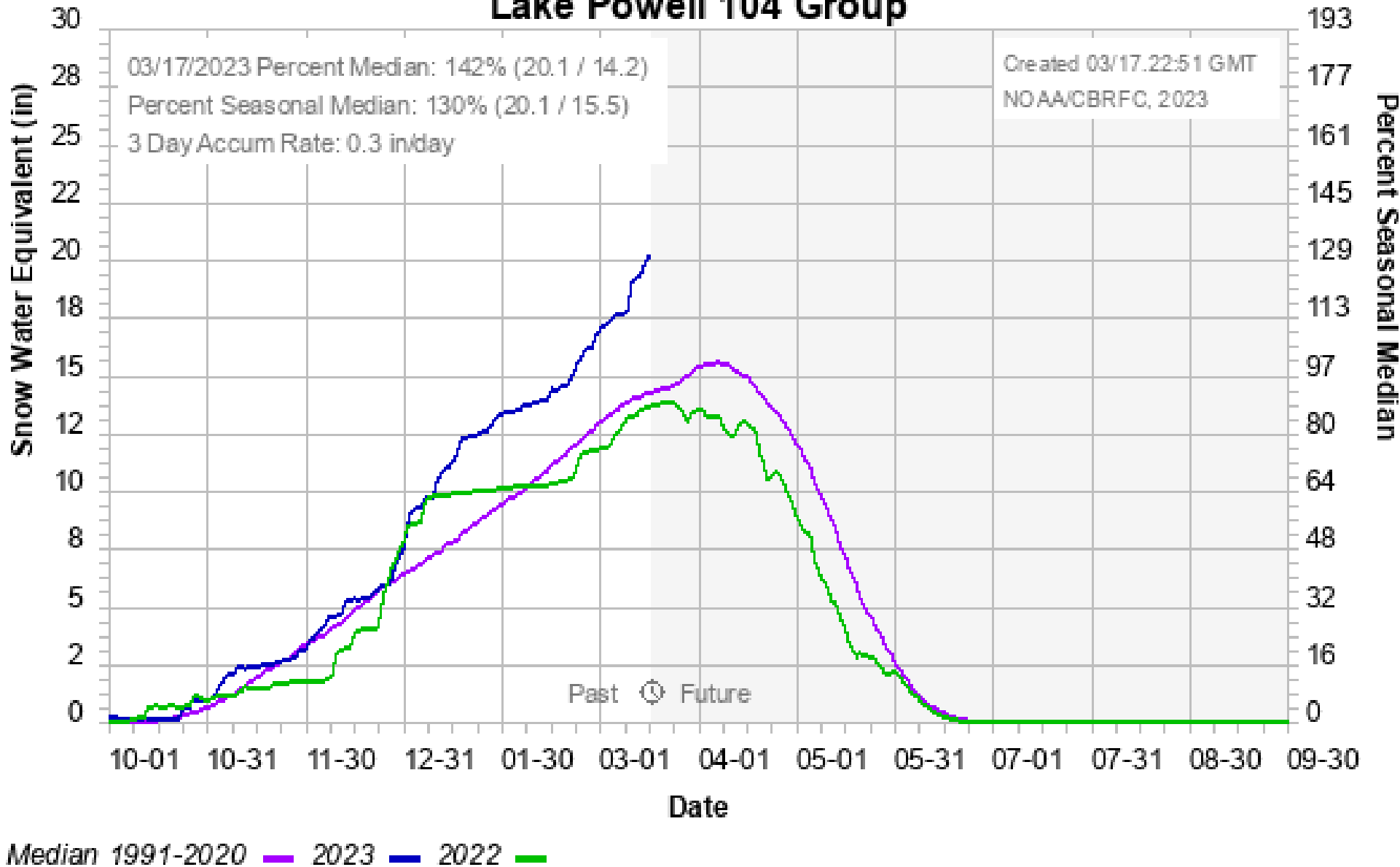
Updated as of March 20, 2023

March 22, 2023



Colorado Basin River Forecast Center

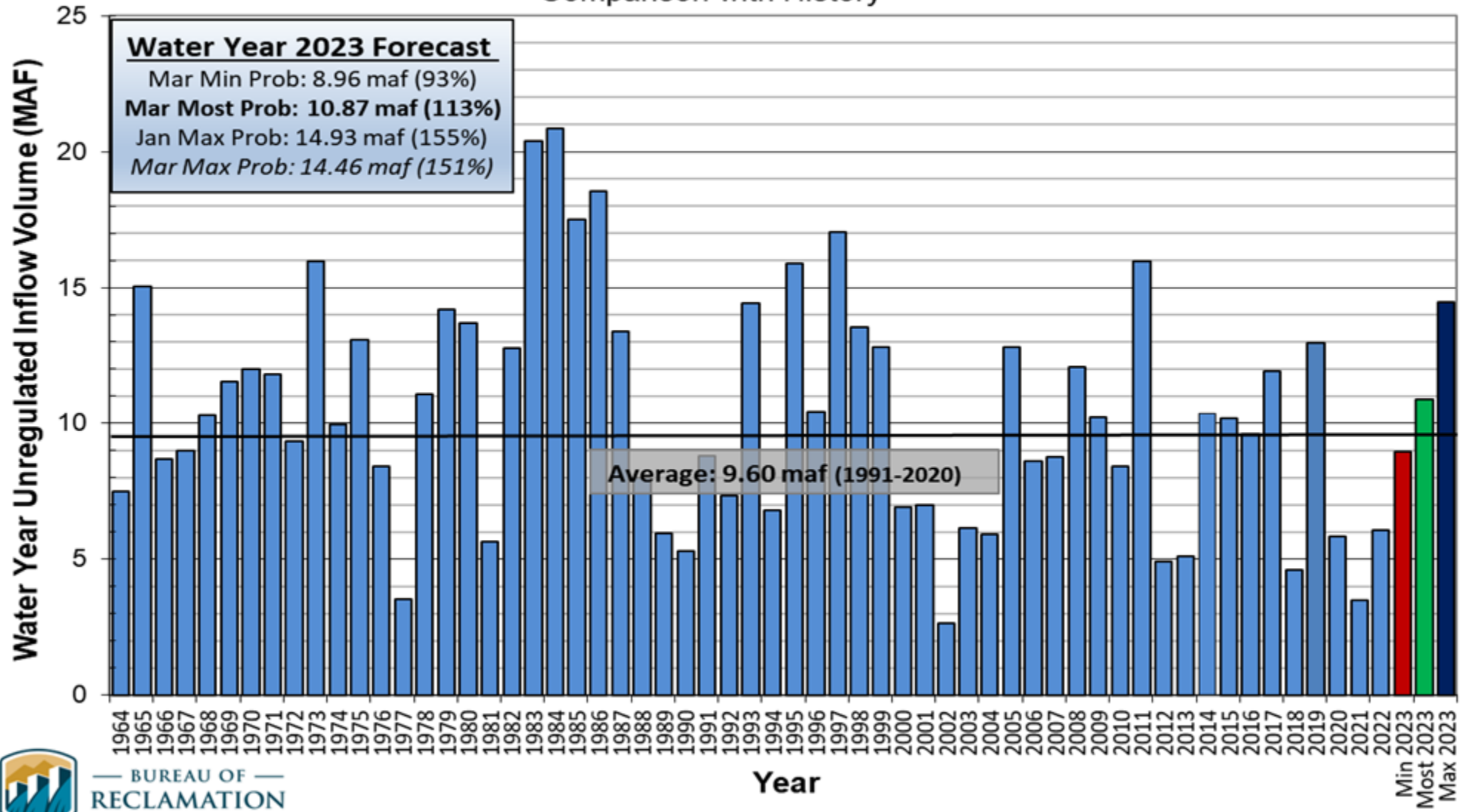
Lake Powell 104 Group



Lake Powell Unregulated Inflow

Water Year 2023 Forecast *(issued March 3)*

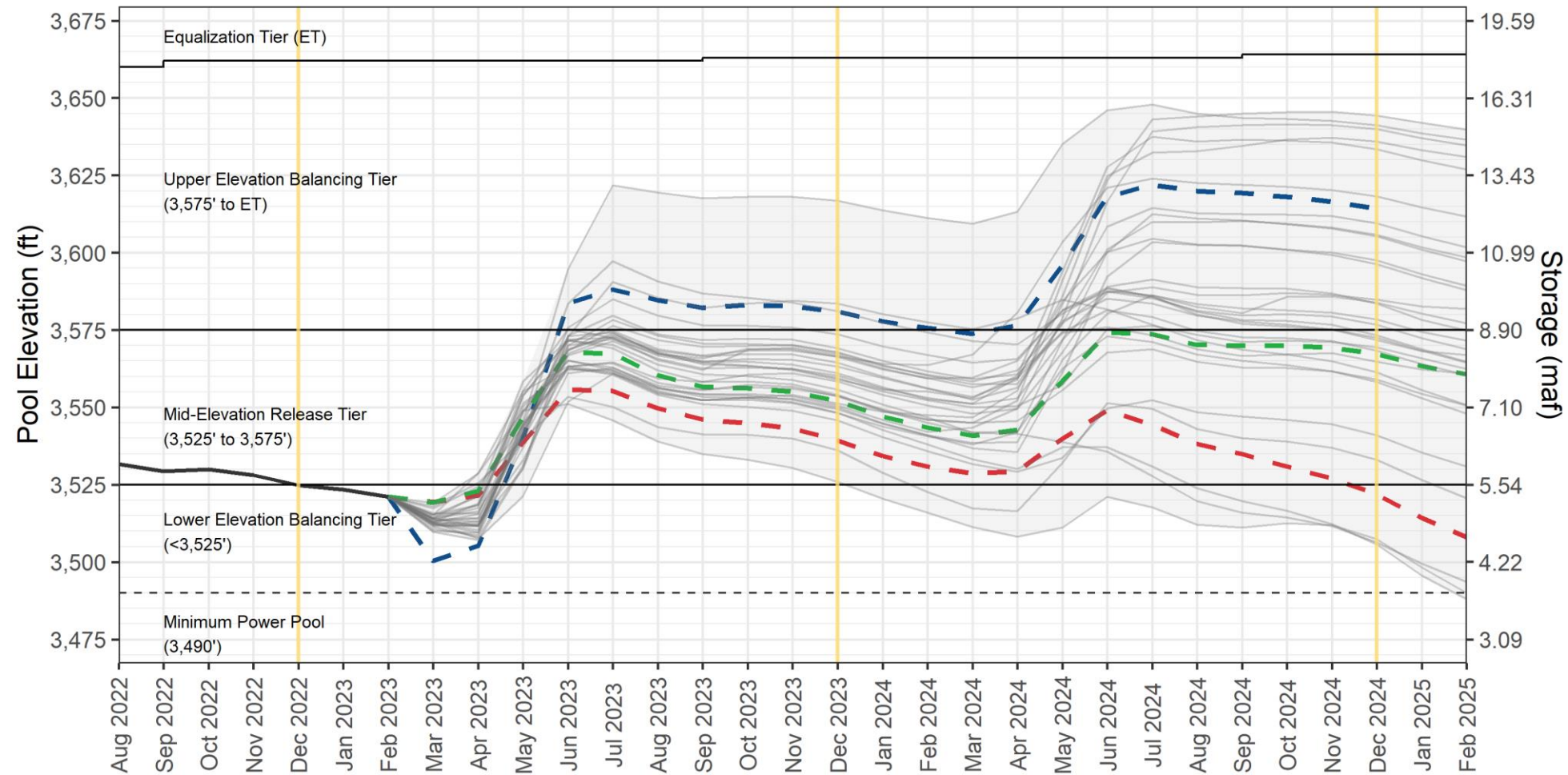
Comparison with History



BUREAU OF RECLAMATION

Lake Powell End-of-Month Elevations¹

CRMMS Projections from January and March 2023



End of CY 2023 Projections

Most Probable:
3,552.00 feet (29.74% full)

Probable Min:
3,539.35 feet

End of CY 2024 Projections

Most Probable:
3,567.21 feet (34.17 % full)

Probable Min:
3,521.91 feet

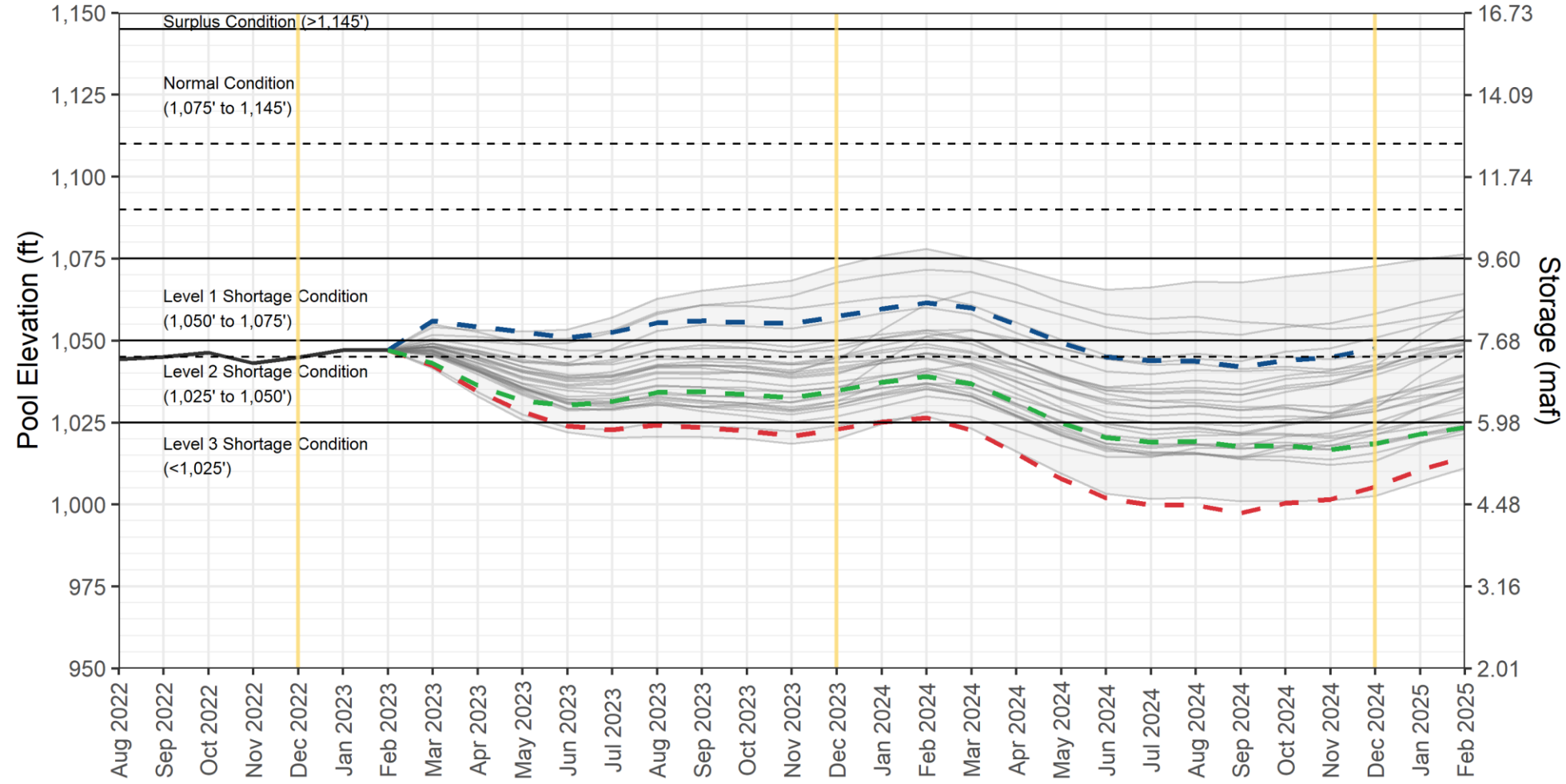
- March 2023 Probable Minimum 24-Month Study
- January 2023 Probable Maximum 24-Month Study
- March 2023 Most Probable 24-Month Study
- Historical
- CRMMS-ESP Projections (30 projections)
- CRMMS-ESP Projections Range

¹ Projected Lake Powell end-of-month physical elevations from the latest CRMMS-ESP and 24-Month Study inflow scenarios.



Lake Mead End-of-Month Elevations¹

CRMMS Projections from January and March 2023



- - March 2023 Probable Minimum 24-Month Study
- - January 2023 Probable Maximum 24-Month Study
- - March 2023 Most Probable 24-Month Study
- Historical
- CRMMS-ESP Projections (30 projections)
- CRMMS-ESP Projections Range

End of CY 2023 Projections

Most Probable:
1,034.62 feet (22.84 % full)

Probable Min:
1,022.94 feet

End of CY 2024 Projections

Most Probable:
1,018.52 feet (19.25% full)

Probable Min:
1,005.30 feet

Lake Mead Dead Pool:
895 feet

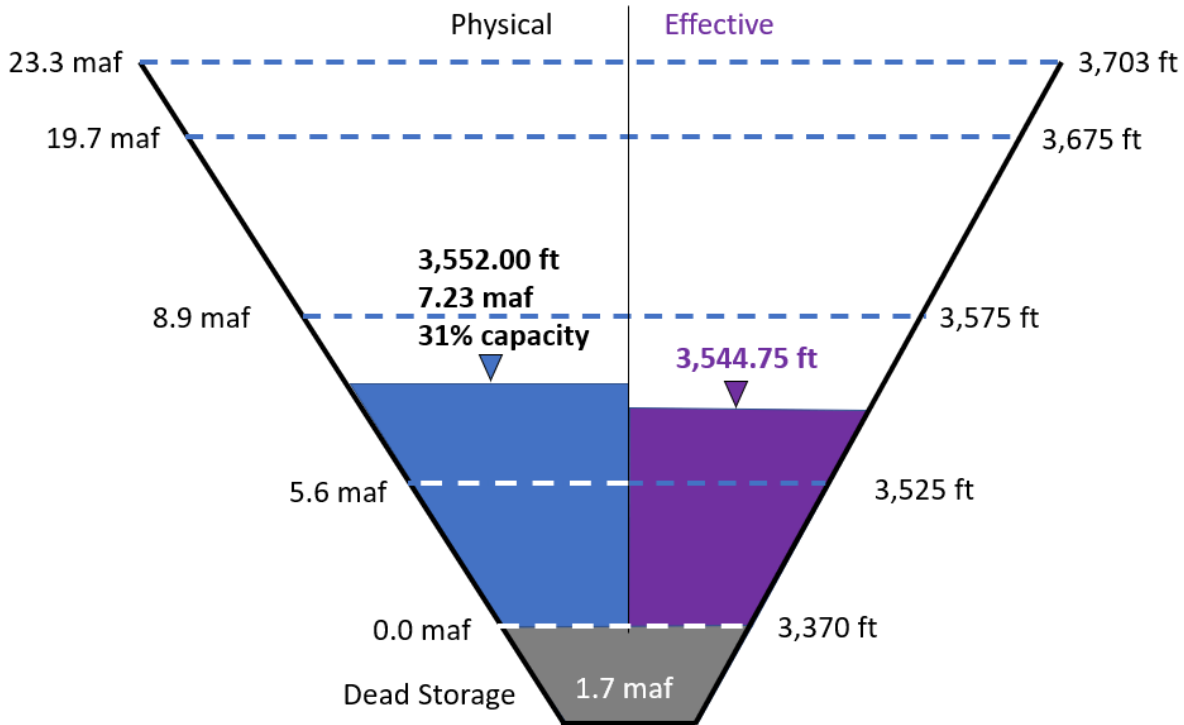
¹ Projected Lake Mead end-of-month physical elevations from the latest CRMMS-ESP and 24-Month Study inflow scenarios.



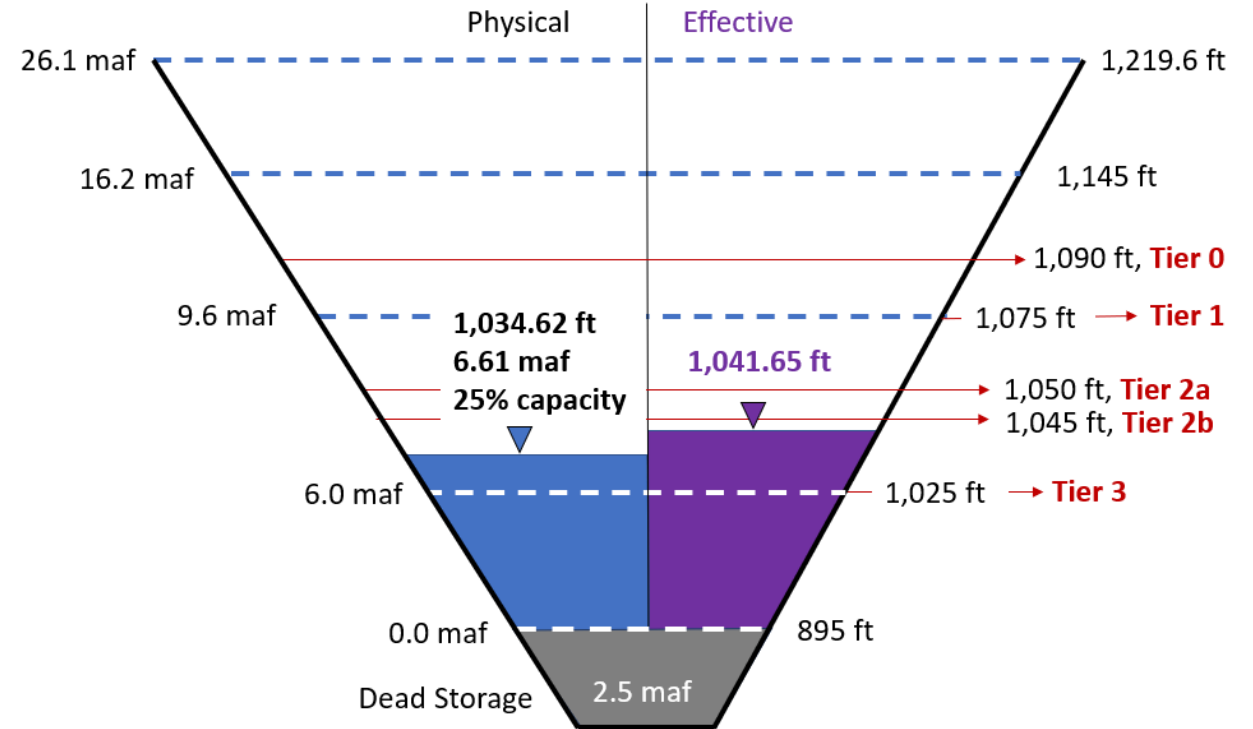
End of Calendar Year 2023 Projections

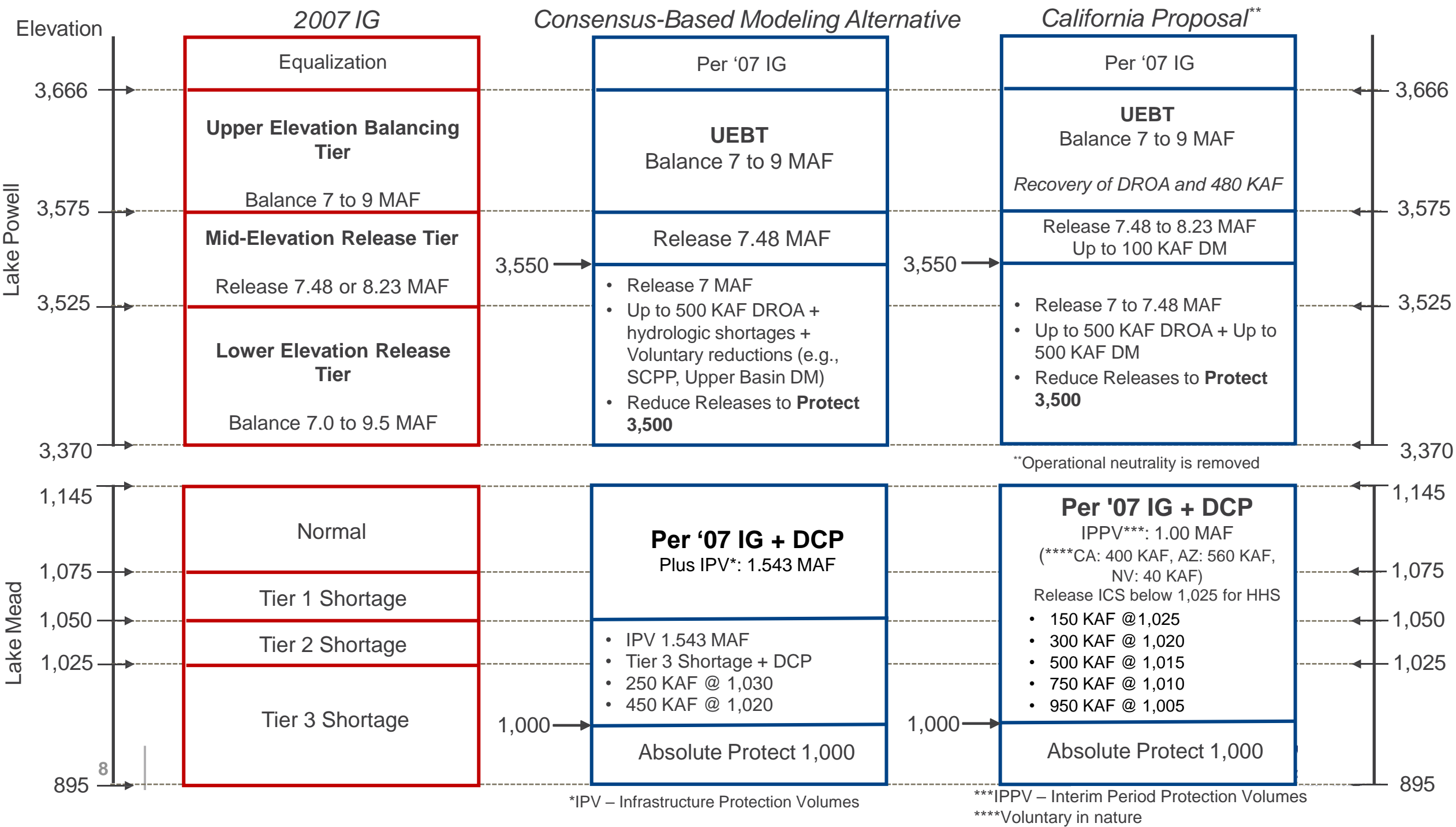
March 2023 24-Month Study Most Probable Inflow Scenario

Lake Powell



Lake Mead





Distinction between CBMA and CA Alternative

- Model results for Mead and Powell pool elevations are comparable because overall protection volumes are at 2 MAF
- California's contributions toward the additional protection volumes are voluntary and not guaranteed
- California's implementation of the protection volumes are proposed to be managed pursuant to the 1968 Colorado River Basin Project Act and Arizona v. California consolidated decree



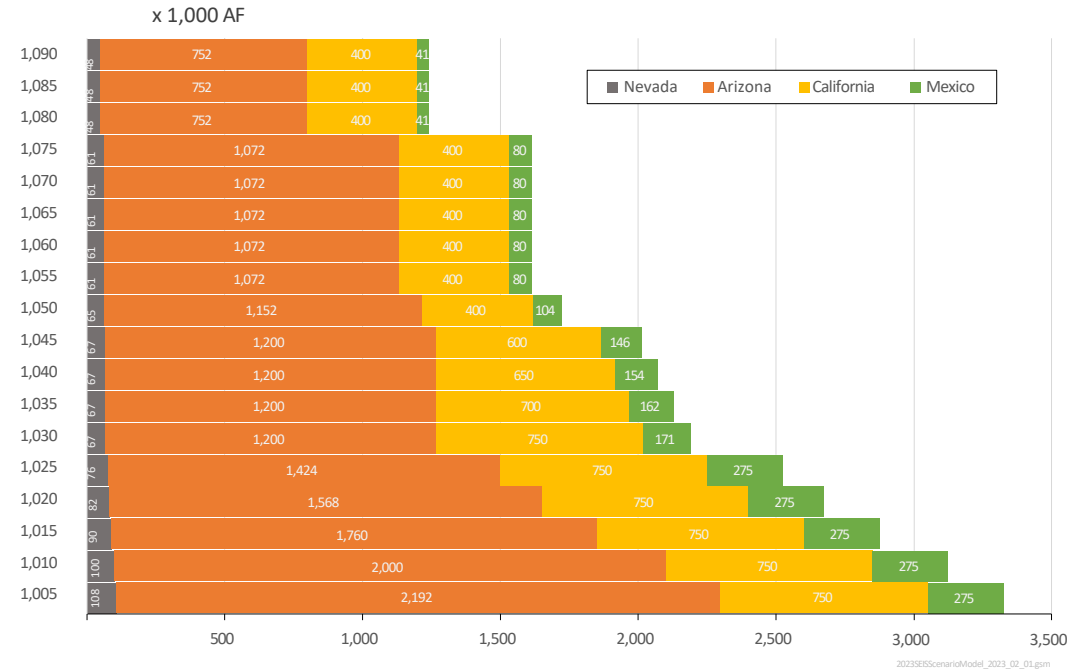
Comparison of SEIS Alternatives

Consensus-Based Modeling Alternative

California Alternative

Reductions by Lower Basin State and Mexico

Reductions by Lower Basin State and Mexico



Provisional data, subject to change

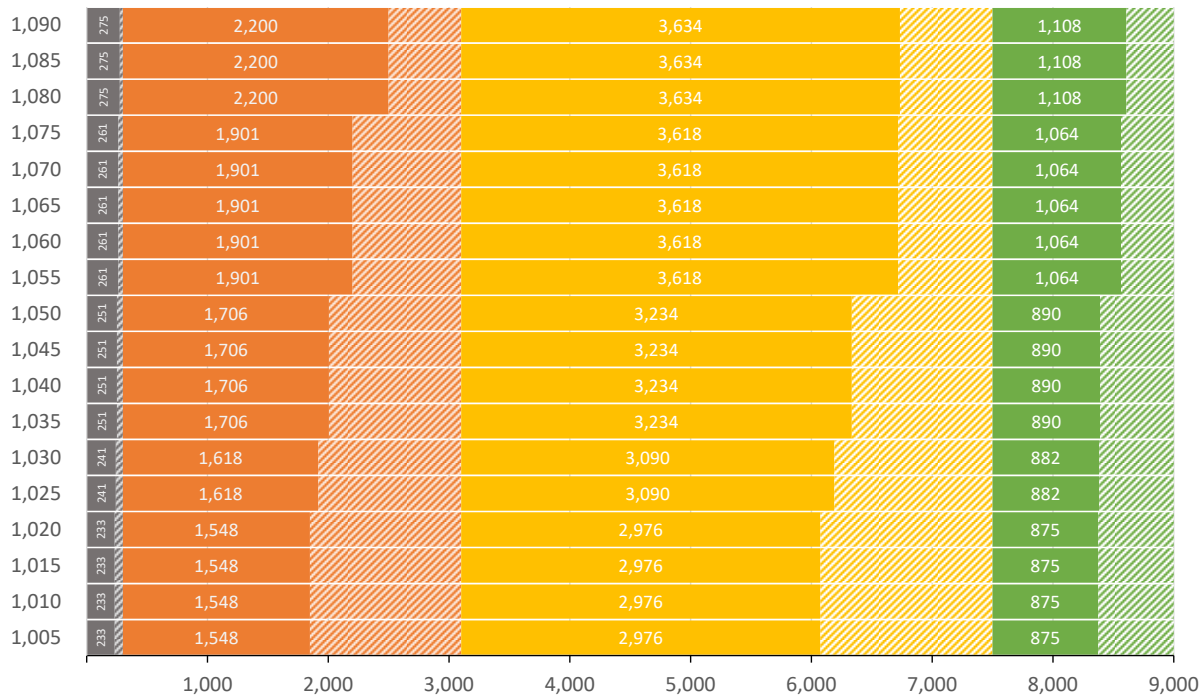


Comparison of Alternatives

Consensus-Based Modeling Alternative

Available as Compared to Apportionments

x 1,000 AF

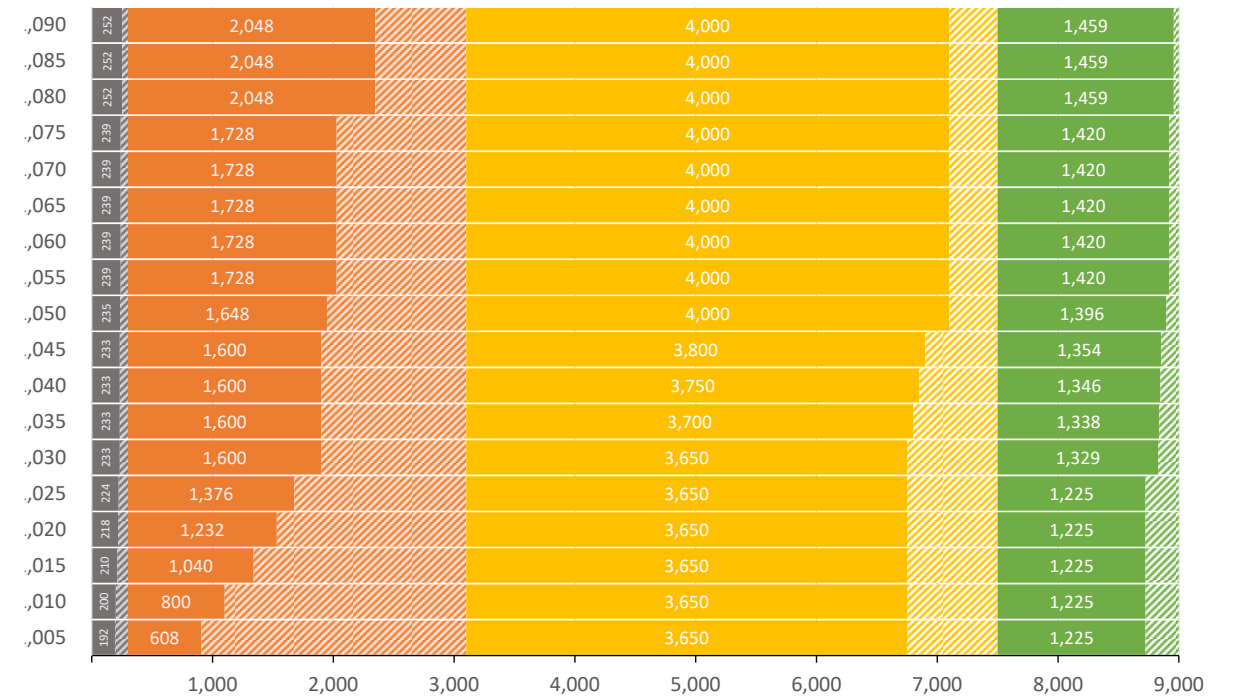
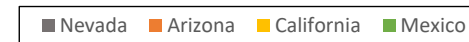


2023SEISScenarioModel_2023_02_01.gsm

California Alternative

Available as Compared to Apportionments

x 1,000 AF



2023SEISScenarioModel_2023_02_01.gsm



Questions?

Kristen Johnson

Manager, Colorado River Programs

Phone: 602.771.8550

Email: kjohnson@azwater.gov

Website: new.azwater.gov

Twitter: [@azwater](https://twitter.com/azwater)

