

# *Arizona Water Banking Authority: Quarterly Meeting*

*James Heffner  
Colorado River Management Section  
Arizona Department of Water Resources*

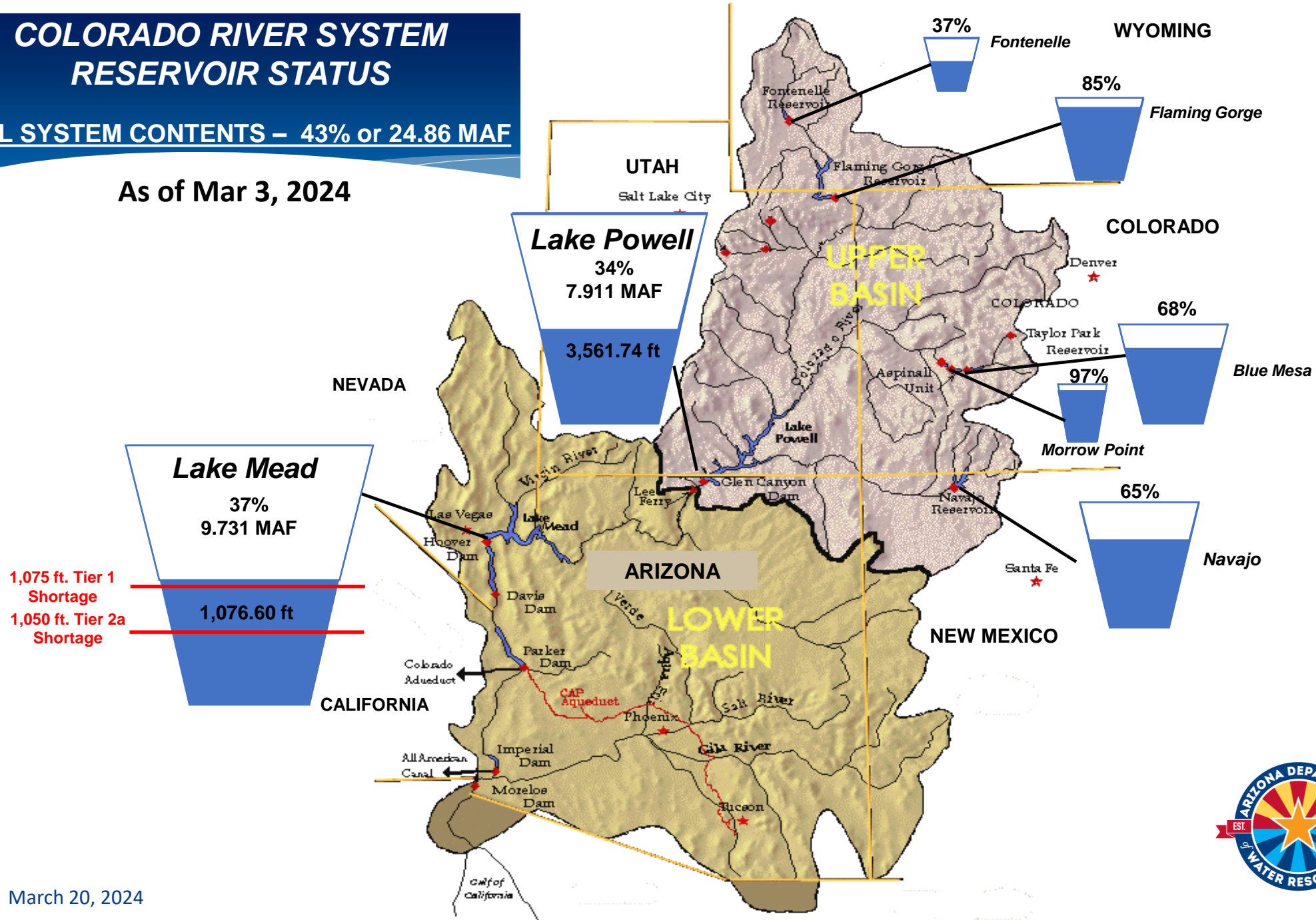
*March 20, 2024*



# COLORADO RIVER SYSTEM RESERVOIR STATUS

TOTAL SYSTEM CONTENTS – 43% or 24.86 MAF

As of Mar 3, 2024

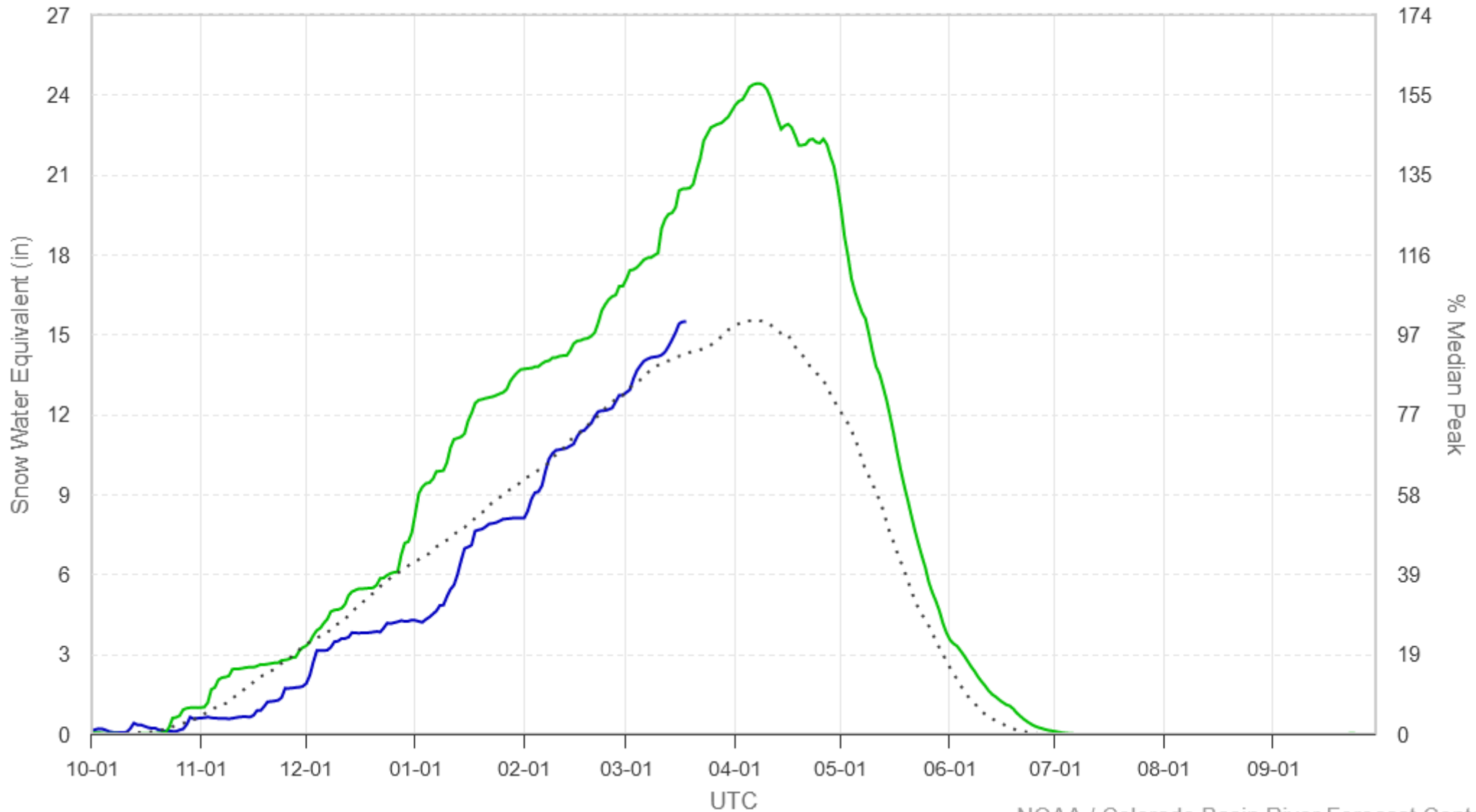


### Lake Powell 104 - Group SNOTEL Plot

104 sites

Ob (03-18): 15.48 in, 108% Med - Rate (in/dy): 0.03 (3-day), 0.38 (week)

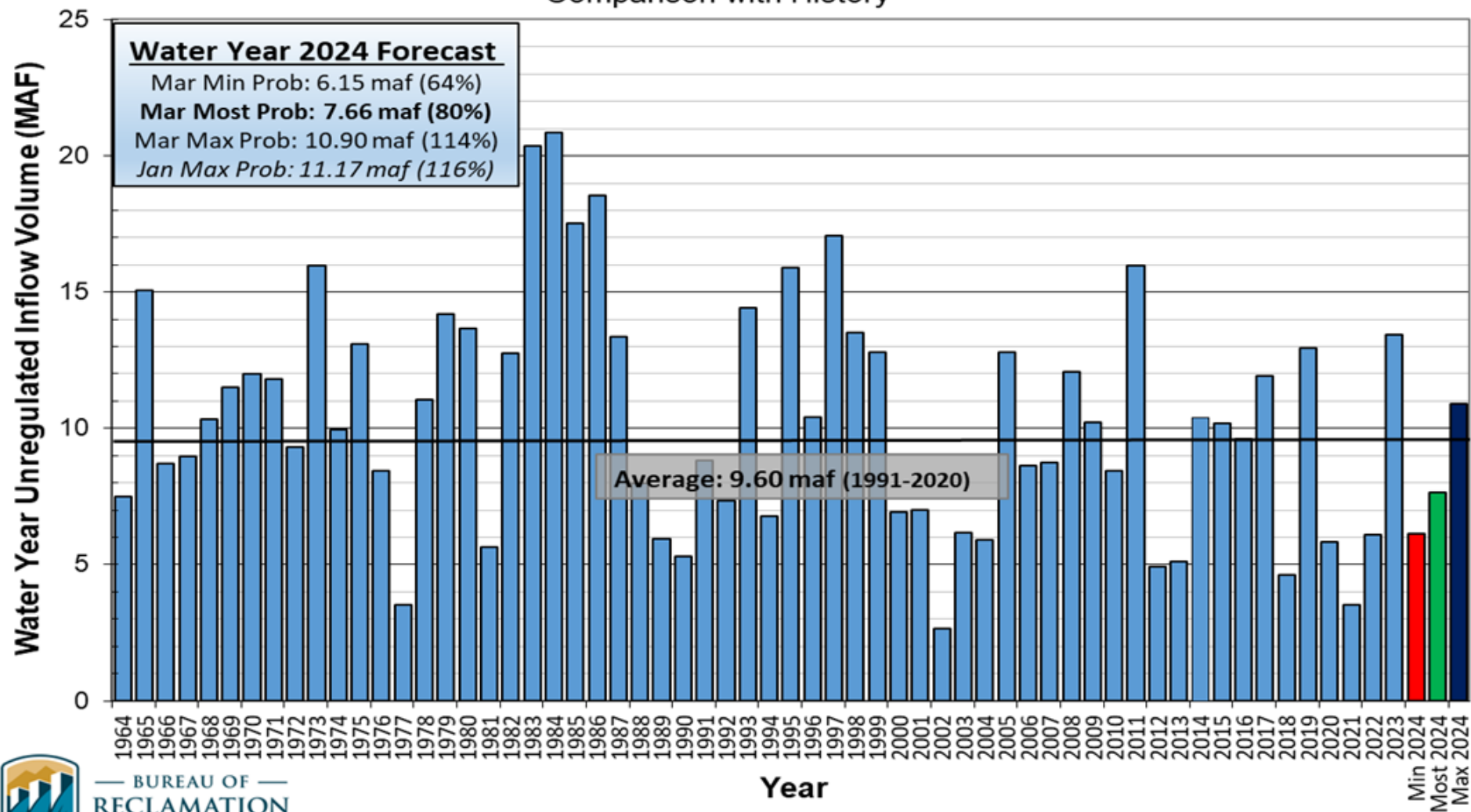
Peak (03-18): 15.48 in (100.00 % Med Pk) - Med Peak (04-07): 15.53 in



# Lake Powell Unregulated Inflow

## Water Year 2024 Forecast (issued March 5)

### Comparison with History

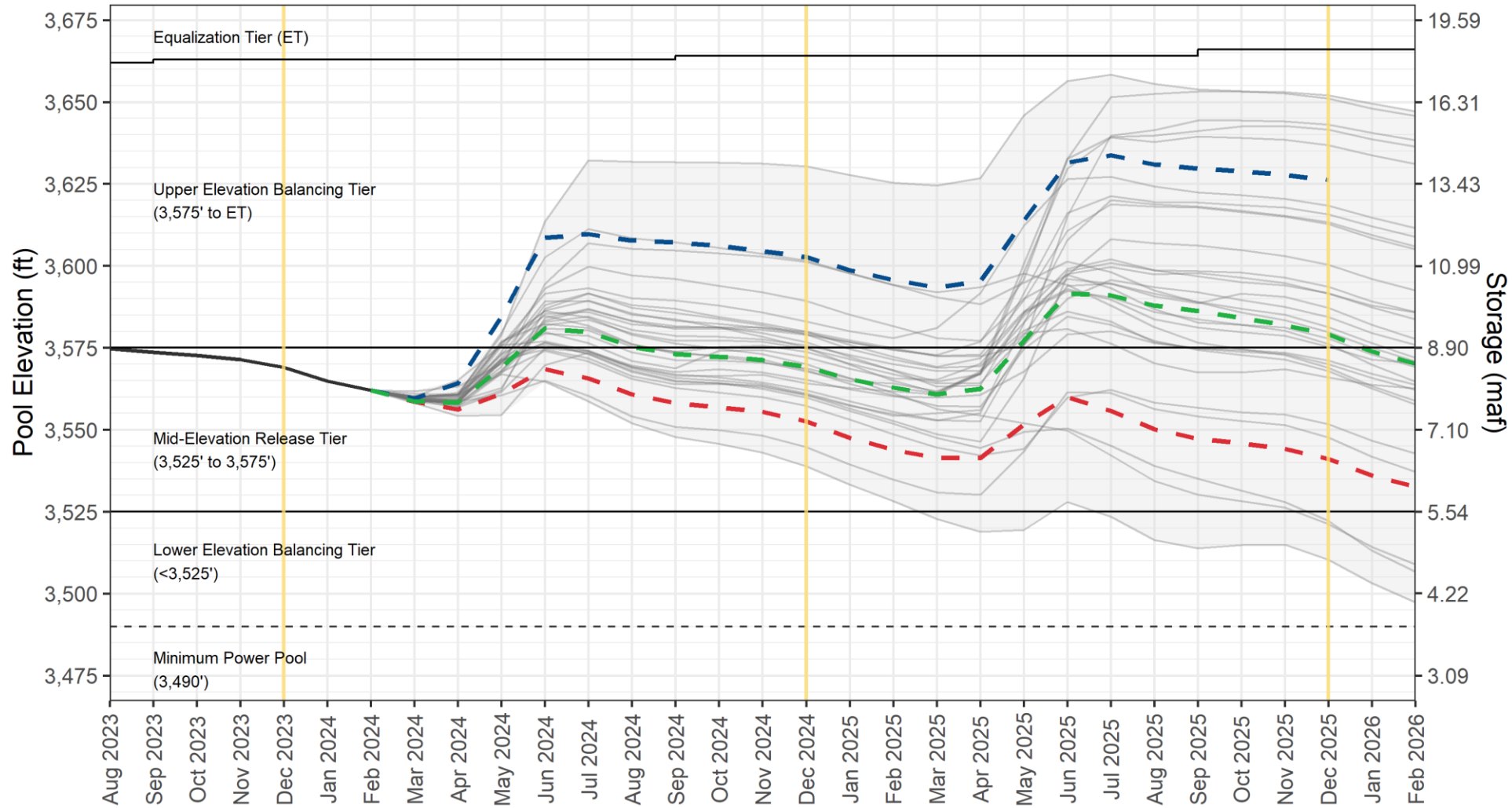


# Supplemental EIS Update:

- Final SEIS released March 5, 2024
- Three Basin States have committed to conserving 3 MAF through the interim period
  - Conservation in addition to IG/DCP reductions
  - None of the 3 MAF will be created by mandatory reductions
  - On track to protect the system through 2026
- Most Lower Basin parties have executed final conservation agreements
- Record of Decision expected early April

# Lake Powell End-of-Month Elevations

## CRMMS Projections from January and March 2024



**End of CY 2024 Projections**

**Most Probable:**  
3,569.19 feet (35% full)

**Probable Min:**  
3,552.56 feet

**End of CY 2025 Projections**

**Most Probable:**  
3,579.15 feet (40% full)

**Probable Min:**  
3,541.13 feet

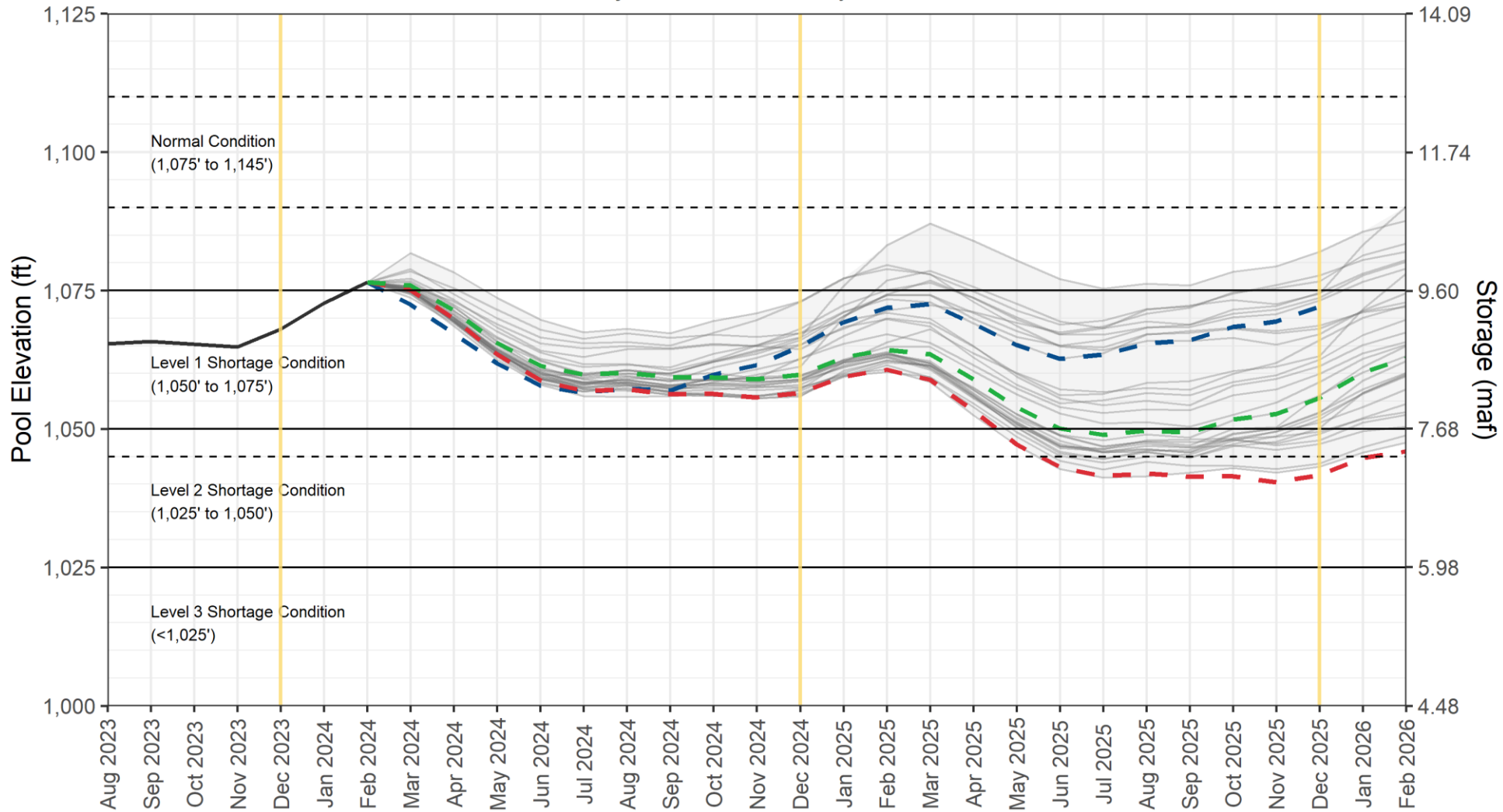
- — January 2024 Probable Maximum 24-Month Study
- — March 2024 Most Probable 24-Month Study
- — March 2024 DROA Probable Minimum 24-Month Study
- Historical
- CRMMS-ESP Projection (30 traces)
- CRMMS-ESP Projections Range

March 20, 2024



# Lake Mead End-of-Month Elevations

## CRMMS Projections from January and March 2024



**End of CY 2024 Projections**

**Most Probable:**  
1,059.82 feet (32% full)

**Probable Min:**  
1,056.45 feet

**End of CY 2025 Projections**

**Most Probable:**  
1,055.60 feet (31% full)

**Probable Min:**  
1,041.68 feet

**Lake Mead Dead Pool:**  
895 feet

- — January 2024 Probable Maximum 24-Month Study
- — March 2024 Most Probable 24-Month Study
- — March 2024 DROA Probable Minimum 24-Month Study
- Historical
- — CRMMS-ESP Projection (30 traces)
- CRMMS-ESP Projections Range

March 20, 2024



# Questions?

## James Heffner

Phone: 602.771.8411

Email: [jheffner@azwater.gov](mailto:jheffner@azwater.gov)

Website: [azwater.gov](http://azwater.gov)

Twitter: [@azwater](https://twitter.com/azwater)

## Colorado River Conditions:

<https://www.azwater.gov/crm/dashboard>

