

Arizona Water Banking Authority Quarterly Commission Meeting



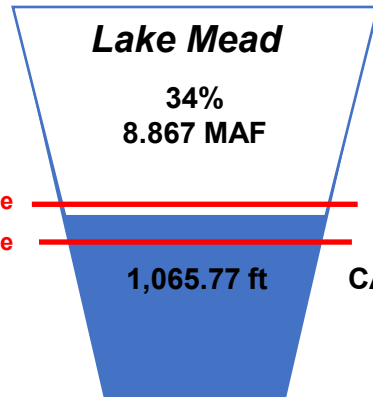
*Kristen Johnson
Colorado River Program Manager
Arizona Department of Water Resources*

June 17, 2024

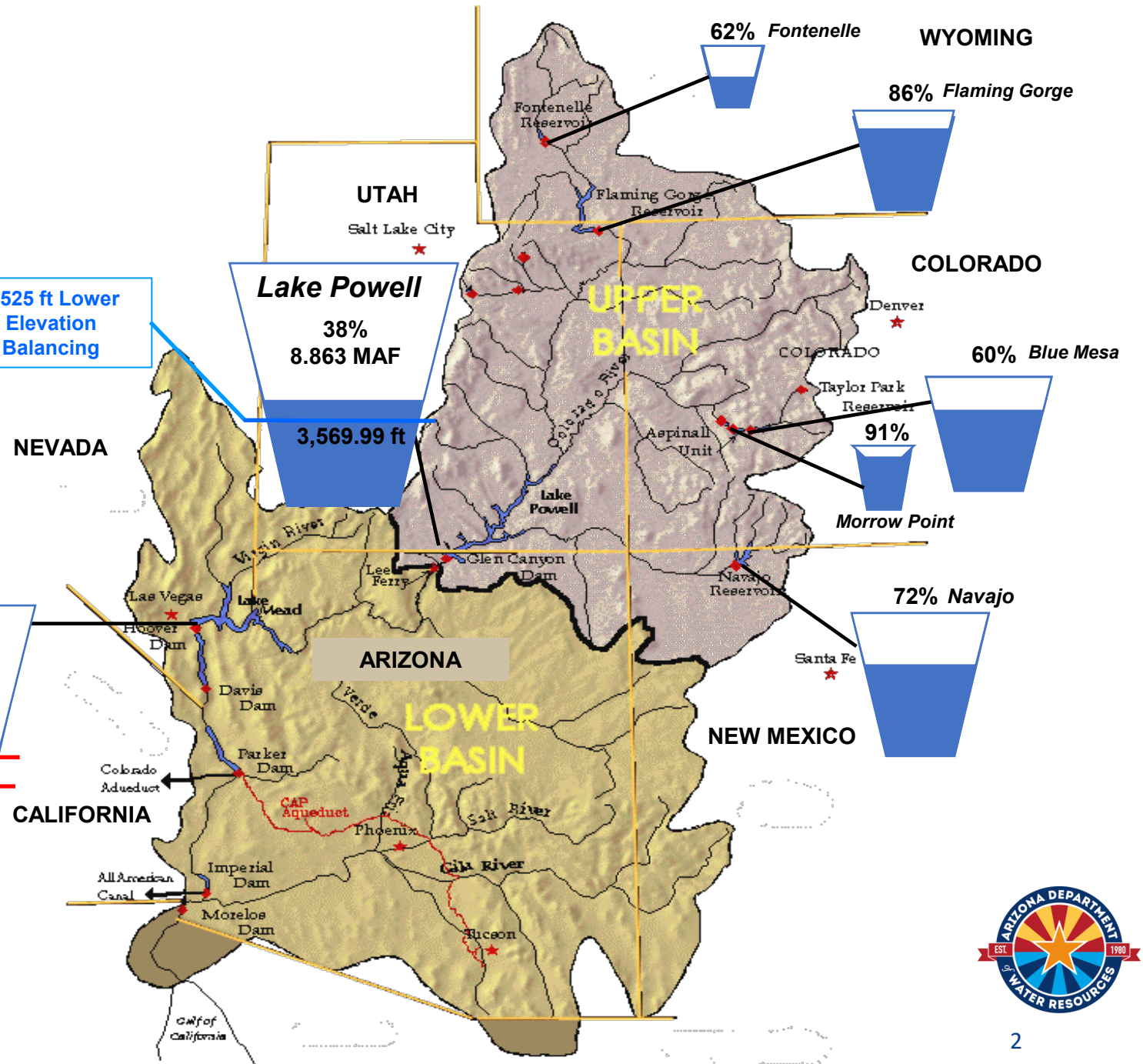
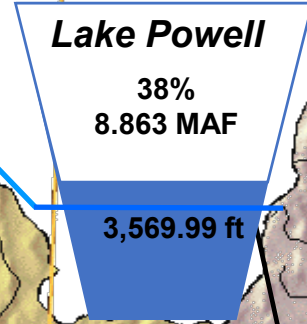
Colorado River System Reservoir Status

	Percent Full	Storage (MAF)
Total System Storage	43	25.18
Total System Storage (this time last year)	41	24.21

1,075 ft Tier 1 Shortage
1,050 ft Tier 2 Shortage



3,525 ft Lower Elevation Balancing



Updated as of June 9, 2024

AWBA Quarterly Meeting - June 17, 2024



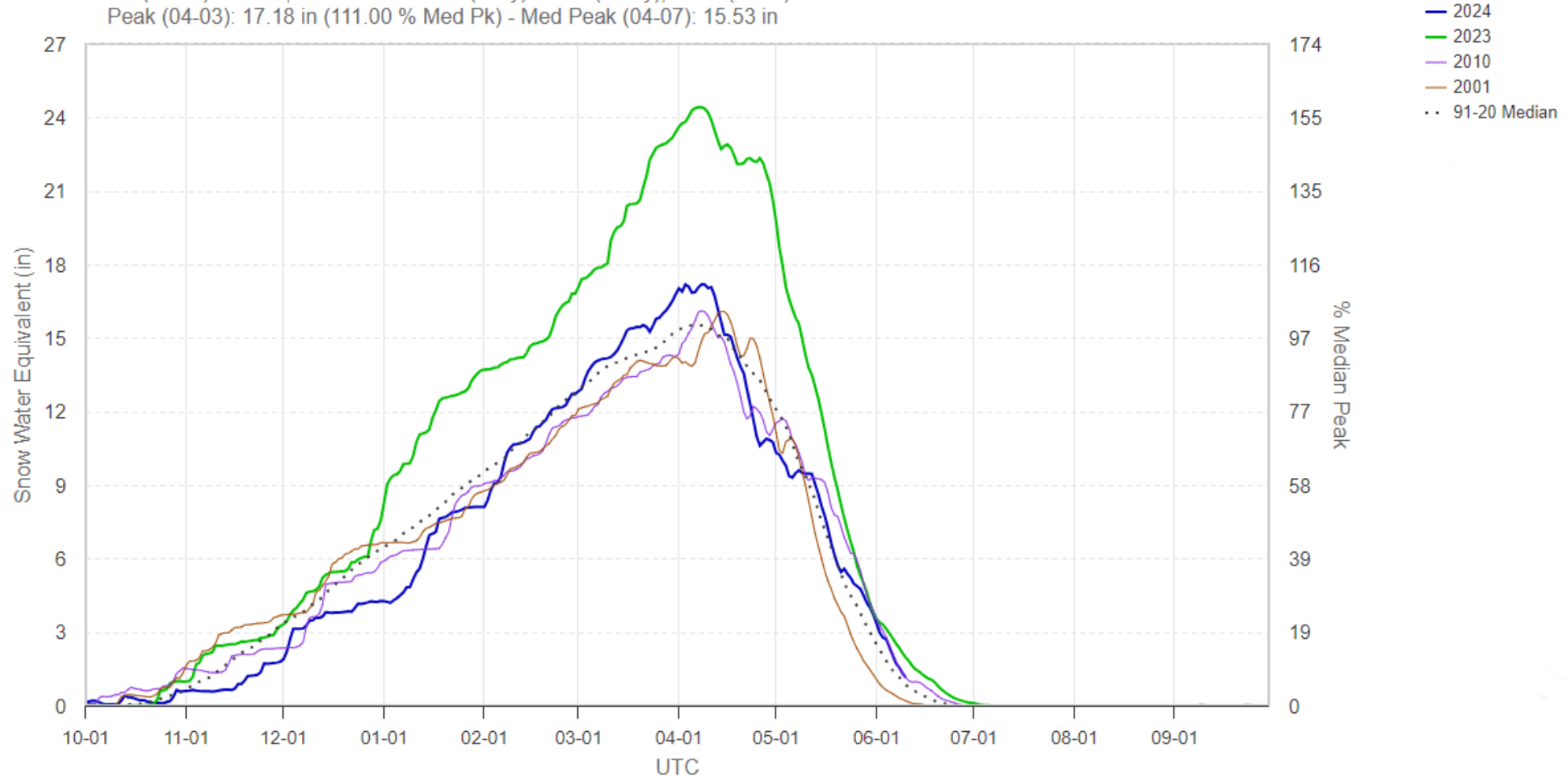
Upper Colorado SWE and Observed Runoff

Lake Powell 104 - Group SNOTEL Plot

104 sites

Ob (06-10): 1.14 in, 134% Med - Rate (in/dy): -0.19 (3-day), -0.23 (week)

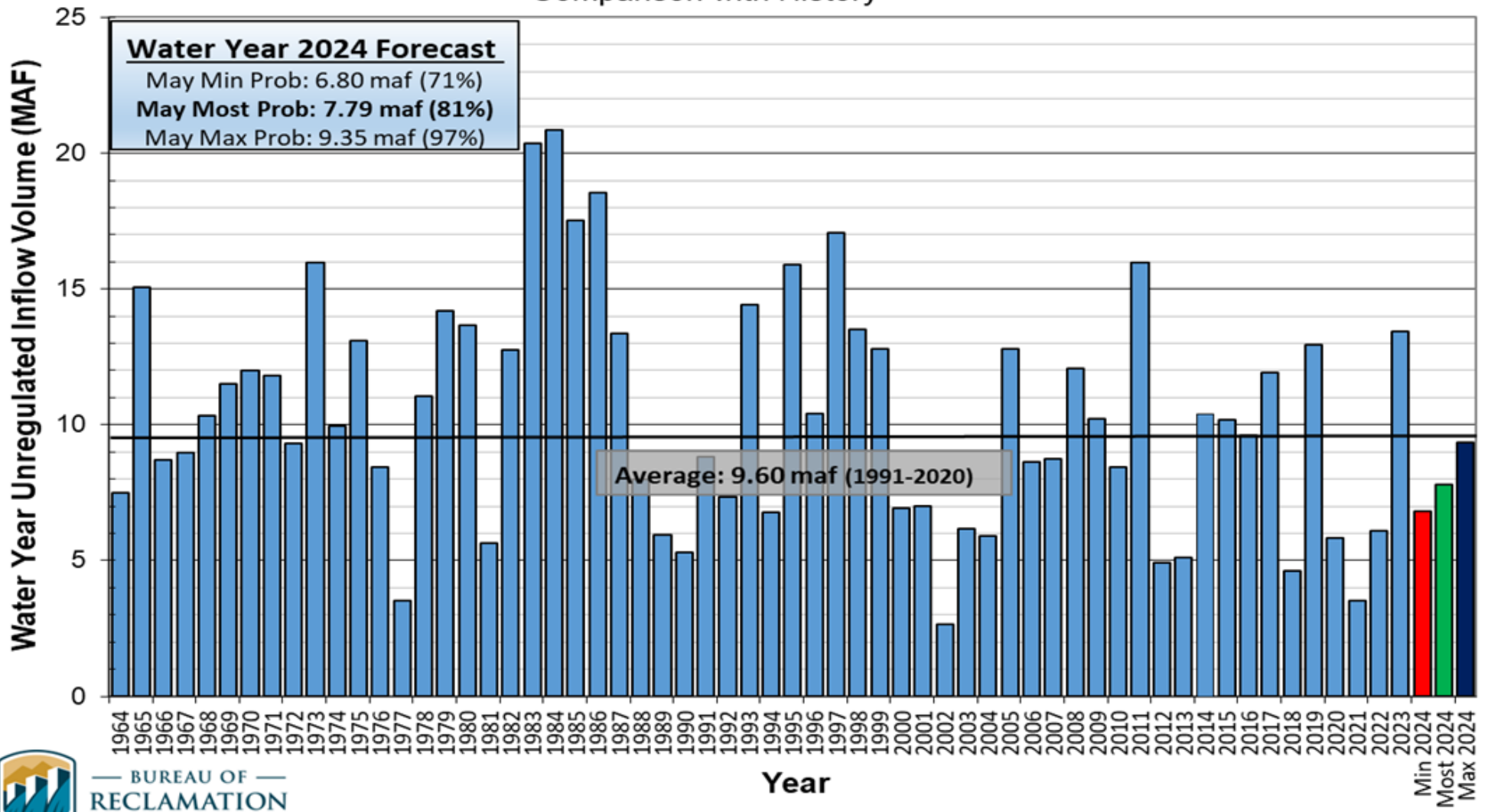
Peak (04-03): 17.18 in (111.00 % Med Pk) - Med Peak (04-07): 15.53 in



Lake Powell Unregulated Inflow

Water Year 2024 Forecast (issued May 3)

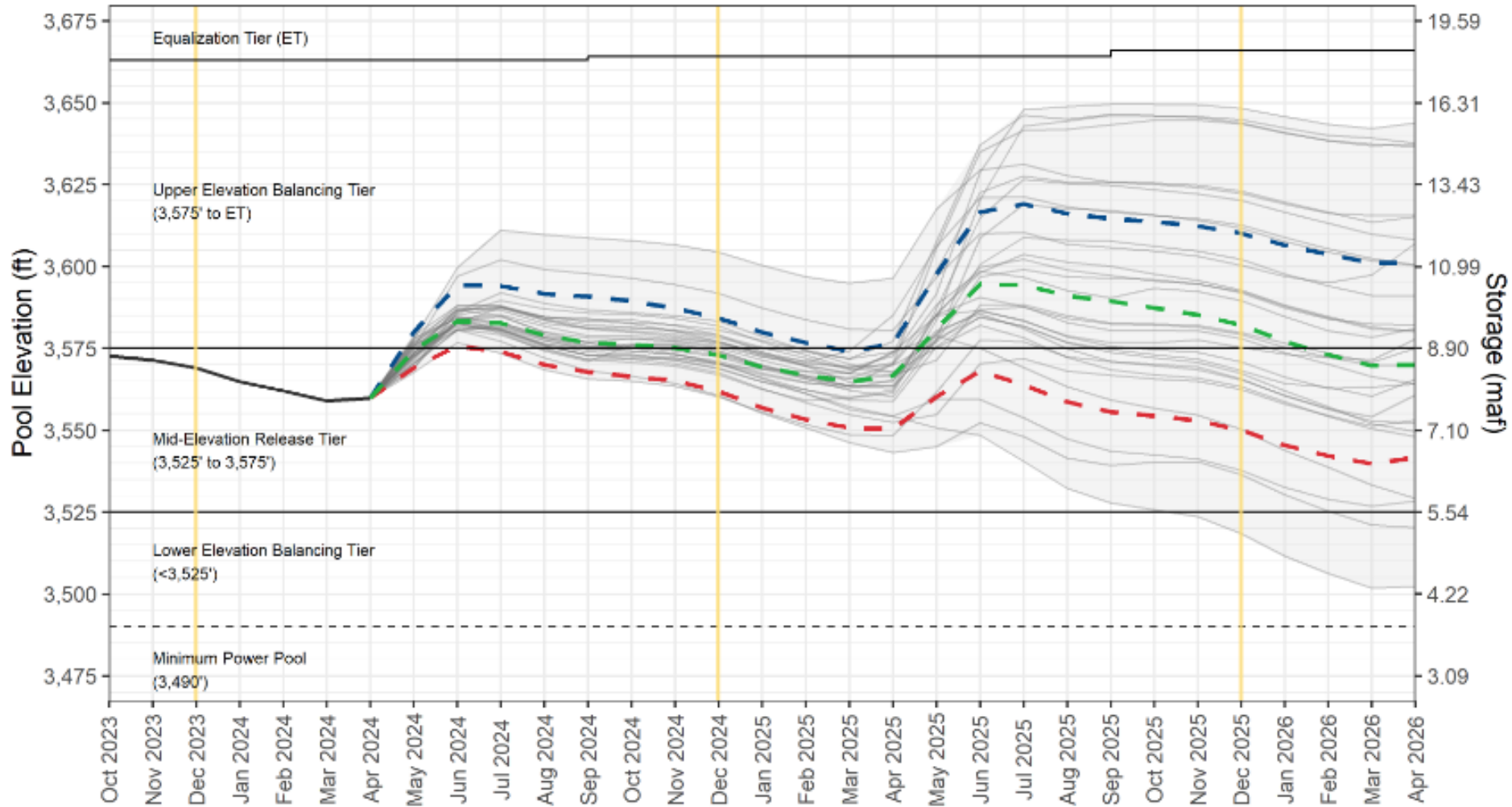
Comparison with History



Compare to
 the April 3rd
 Forecast:
 8.39 MAF



Lake Powell End-of-Month Elevations CRMMS Projections from May 2024



End of CY 2024 Projections

Most Probable:
3,572.92 feet

Probable Min:
3,561.90 feet

End of CY 2025 Projections

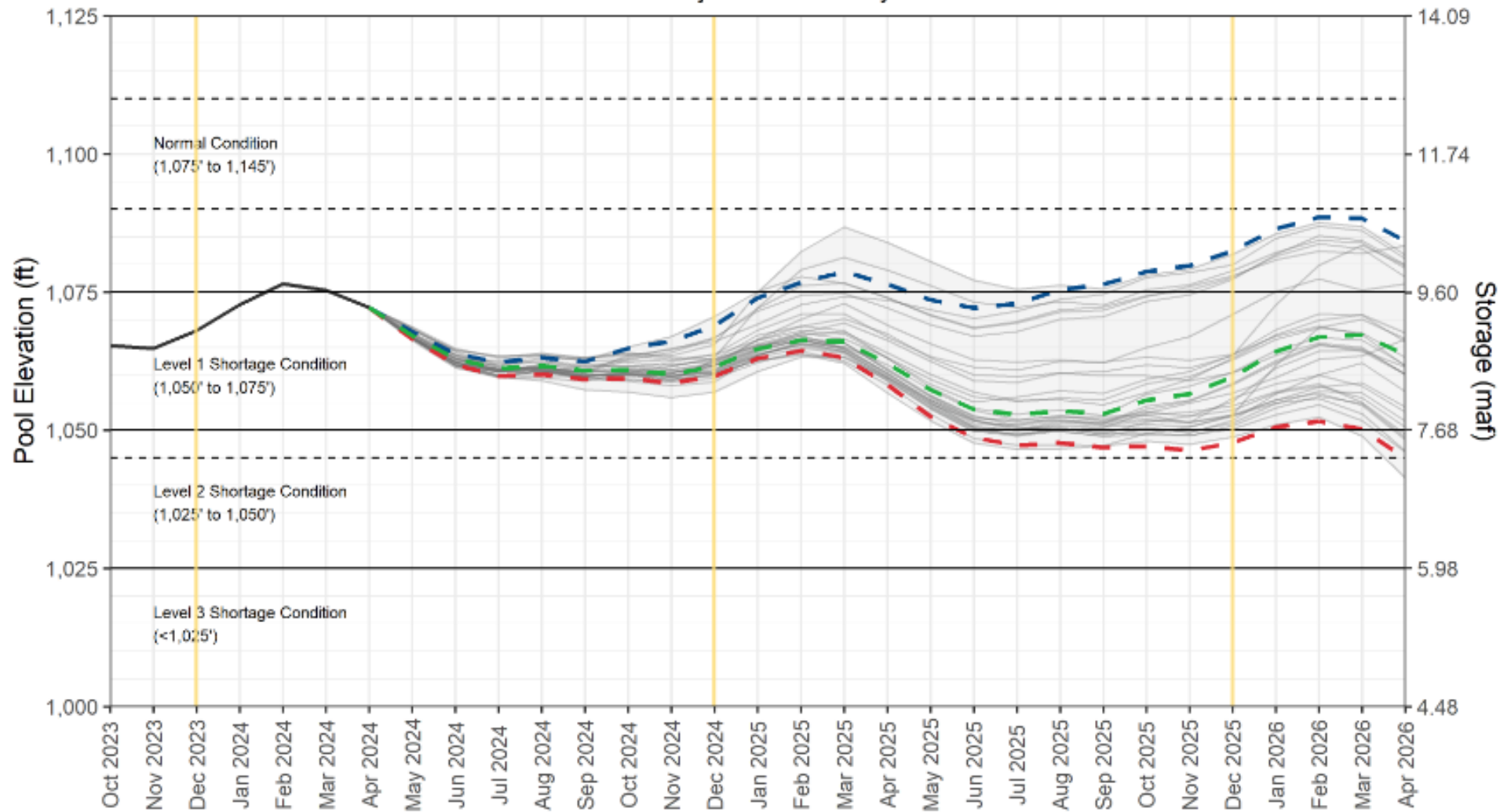
Most Probable:
3,582.12 feet

Probable Min:
3,550.06 feet

— — May 2024 Probable Maximum 24-Month Study — Historical
— — May 2024 Most Probable 24-Month Study — CRMMS-ESP Projection (30 traces)
— — May 2024 Probable Minimum 24-Month Study CRMMS-ESP Projections Range



Lake Mead End-of-Month Elevations CRMMS Projections from May 2024



End of CY 2024 Projections

Most Probable:
1,061.41 feet

Probable Min:
1,059.79 feet

End of CY 2025 Projections

Most Probable:
1,059.62 feet

Probable Min:
1,047.75 feet

- — May 2024 Probable Maximum 24-Month Study
- — May 2024 Most Probable 24-Month Study
- — May 2024 Probable Minimum 24-Month Study
- Historical
- — CRMMS-ESP Projection (30 traces)
- CRMMS-ESP Projections Range



SEIS Record of Decision

- On May 9, 2024, the Department of the Interior signed the Record of Decision to implement the Lower Basin's plan to conserve three million acre-feet through 2026 to keep Lake Mead from reaching 1,000' elevation.
 - Exceeds conservation levels required under the Interim Guidelines and DCP.
 - Lake Powell releases could be adjusted to no less than 6 maf if elevation falls below 3,500 feet.
 - Lake Powell and Lake Mead are projected to remain above critical elevations through 2026.

Status of SEIS ROD Lower Basin Conservation¹

As of May 2024 (all volumes in acre-feet)

State	LCB Water Entitlement Holder/Tribe	2023	2024	2025	2026
Arizona	Fort McDowell Yavapai Nation SCW	13,933	13,933	13,933	
Arizona	Gila River Indian Community SCW	91,319	125,000	125,000	
Arizona	Hopi Tribe SCW	2,679	3,059	3,059	
Arizona	San Carlos Apache Tribe SCW	23,804			
Arizona	Central Arizona Project (CAP) Subcontractors SCW	141,400	129,400	128,800	2,400
Arizona	Mohave Valley Irrigation and Drainage District SCW	12,819	13,441	13,441	
Arizona	Yuma Mesa Irrigation and Drainage District SCW	21,556	21,795	21,795	
Arizona	Cibola Valley Irrigation and Drainage District SCW	1,682	2,328	2,328	
Arizona	Cathcart Farms SCW	57	61	61	
Arizona	GM Gabrych Family Limited Partnership SCW	3,240	3,240	3,240	
Arizona	CAP ICS Preservation Program	41,776			
California	Coachella Valley Water District SCW	35,000	35,000	45,000	10,000
California	Quechan Tribe-Metropolitan Water District (MWD) SCW	13,000	13,000	13,000	
California	Palo Verde Irrigation District-MWD SCW	71,507	117,021	117,021	79,830
California	Imperial Irrigation District SCW	106,111			
California	MWD Extraordinary Conservation ICS	450,000			
California	MWD Extraordinary Conservation Left in Lake Mead (non-ICS)	25,066			
Nevada	SNWA Tributary Conservation ICS	36,075			
Nevada	SNWA Extraordinary Conservation Left in Mead (non-ICS)	88,156			
	Annual Volumes	1,179,180	477,278	486,678	92,230
	Cumulative Volumes	1,179,180	1,656,458	2,143,136	2,235,366

¹ Volumes reflect final accounting in the 2023 Water Accounting Report and executed system conservation agreements based on current projections. Any projected or provisional volumes are subject to change. Additional conservation activities are being considered including system conservation, ICS, and other conserved water in 2024, 2025, and 2026. These additional activities will be included in Reclamation's operational modeling.



Post-2026 Guidelines Update

- Following the Lower Basin's March 6, 2024, submission to Reclamation of its alternative, Reclamation has been working with the Lower Basin to round out some of the modeling assumptions that are needed to be fed into the model.
- Lower Basin requested, and Reclamation has agreed to model reductions to the LB in two primary ways:
 - Pro-rata to all users
 - By priority
- Request was also made to allocate the remaining (up to) 2.4 maf of reductions contemplated in the Basinwide Reduction Zone & Basinwide Max. Reduction Zone:
 - to the UB
 - Split between the LB and the UB

Post-2026 Guidelines Update: 38 Sovereign Group

- Reclamation announced at the May 9th 38 Sovereign meeting it will model the Lower Basin Alternative in a third and fourth way:
 - “Intend to include proposed Lower Basin shortage distribution that is ‘pro-rata’ but without reductions to the 5 Lower Basin mainstem tribes with present perfected rights”
 - “Will also include Lower Basin Shortage distribution that does not reduce and protects all tribal water”
 - “Developing demand projections that reflect full development of tribal water entitlements by approximately 2040”
 - “Opportunities in design of Lake Mead and/or Lake Powell storage and delivery mechanism to incorporate tribal priorities”

Post-2026 Guidelines Update: Joint Tribal Letter

- This week, ADWR received a courtesy copy of a letter from 20 of the Basin's 30 Tribes to the Commissioner outlining agreed upon key principles.
 - “To meet its trust responsibility to Basin Tribes, the United States must take actions to actively protect Tribal water rights (irrespective of whether they have already been finally quantified...)”.
 - “Empower Tribes to determine how and when to use their water rights by adopting and supporting a portfolio of flexible tools.”
 - “Provide for a permanent, formalized structure for Tribal participation in implementing Post-2026 Guidelines, and in any future Colorado River policy and governance.”

Post-2026 Guidelines Update: Joint Tribal Letter

Other sub-bullets include:

- “Reject any alternative that would impose involuntary or uncompensated out-of-priority cuts on the five Tribes whose rights were finally decreed in *Arizona v. California...*”
- “For CAP Tribes with congressionally approved settlements, finding alternative water supplies that are equivalent in value to the water rights lost due to cuts required under the Post-2026 Guidelines;”
- “Identify all potential adverse impacts, whether direct, indirect, or cumulative, to Tribal Water Rights, whether such water is being presently put to use or is as yet unused...”
- “Clarify legal authority and address accounting issues to enhance Tribes’ ability to lease or otherwise market or use water off their Reservations, including for environmental and in-stream flow purposes.”

Questions?

Kristen Johnson

Phone:

Email: kjohnson@azwater.gov

Website: azwater.gov

Twitter: [@azwater](https://twitter.com/azwater)

Colorado River Conditions:

<https://www.azwater.gov/crm/dashboard>

