

Arizona Water Banking Authority Quarterly Commission Meeting

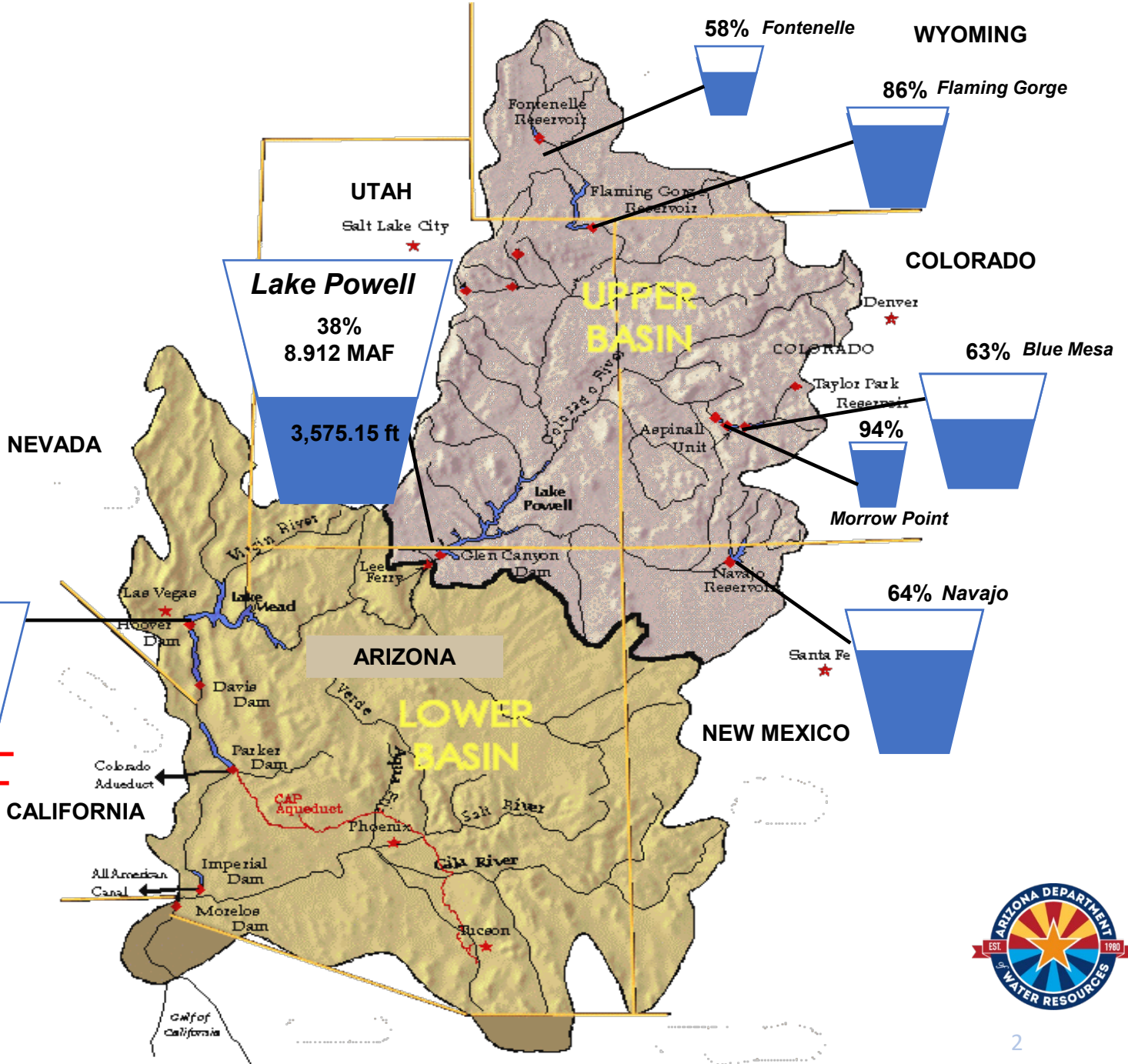


*Kristen Johnson
Colorado River Programs Manager
Arizona Department of Water Resources*

December 11, 2024

Colorado River System Reservoir Status

	Percent Full	Storage (MAF)
Total System Storage	42	24.6
Total System Storage (this time last year)	43	24.9



Updated as of December 1, 2024



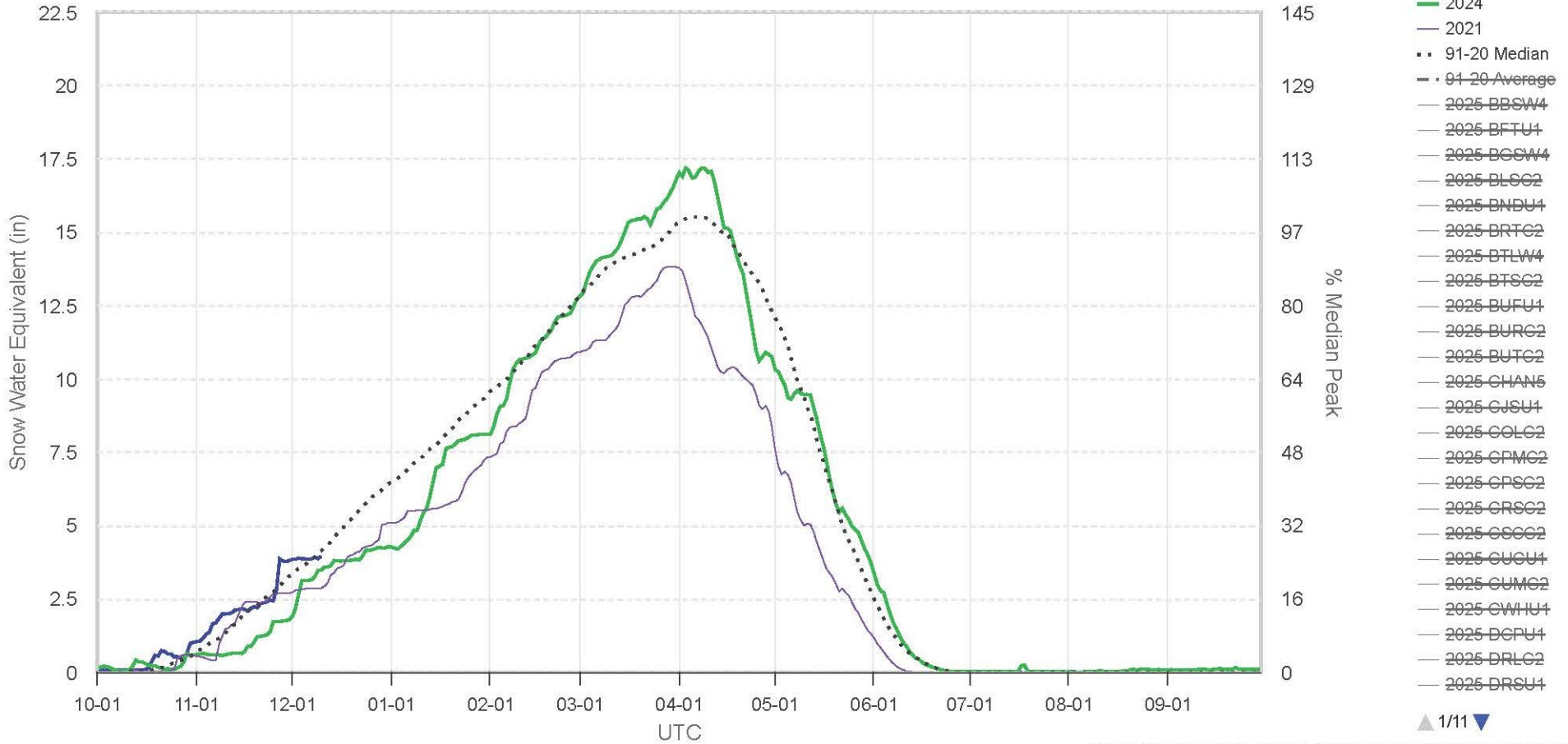
Upper Colorado SWE

Lake Powell 104 - Group SNOTEL Plot

104 sites

Ob (12-10): 3.94 in, 95% Med - Rate (in/dy): 0.03 (3-day), 0.01 (week)

Peak (12-10): 3.94 in (25.00 % Med Pk) - Med Peak (04-07): 15.53 in

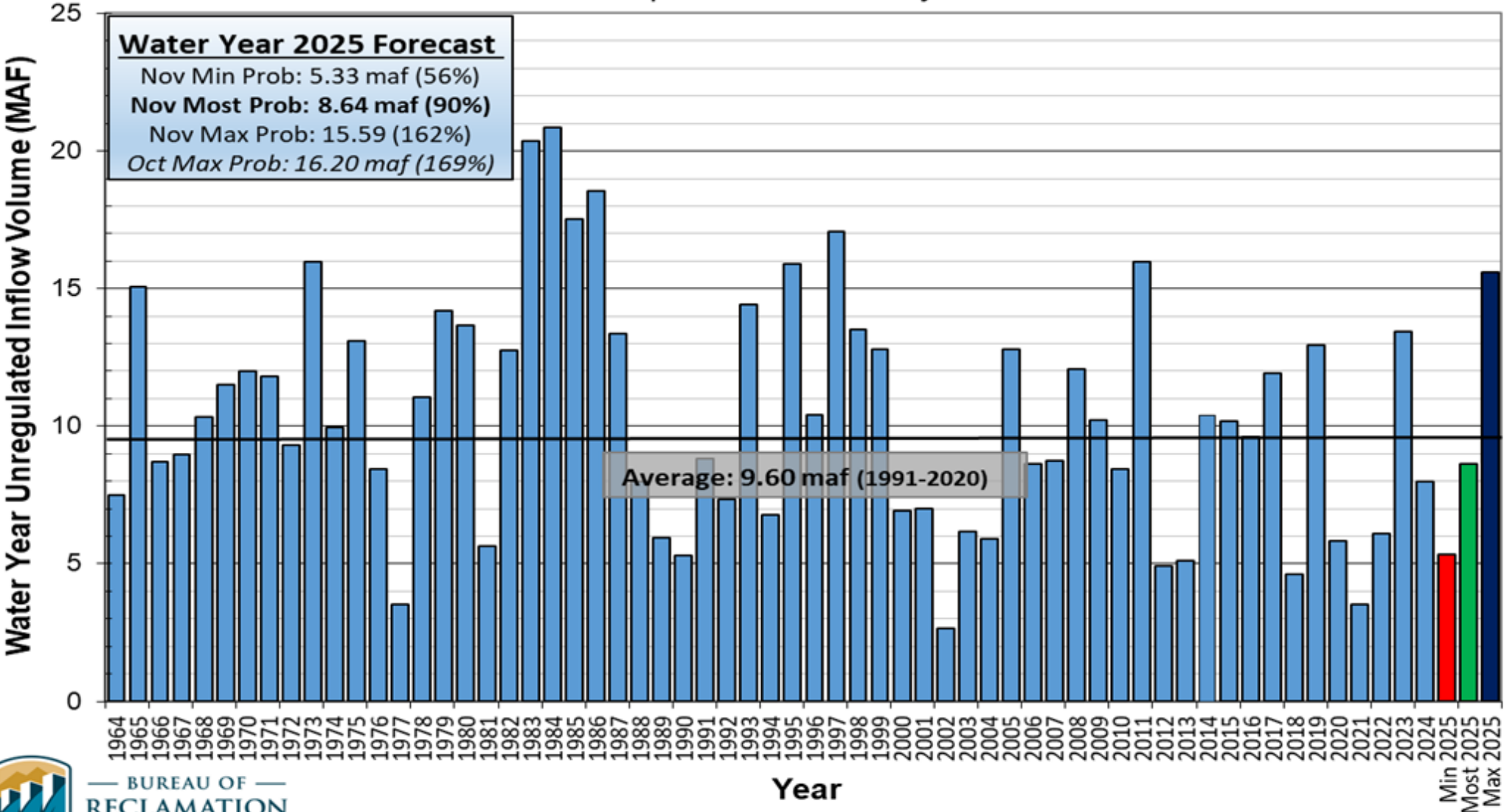


NOAA / Colorado Basin River Forecast Center / 2024-12-10 20:44Z

Lake Powell Unregulated Inflow

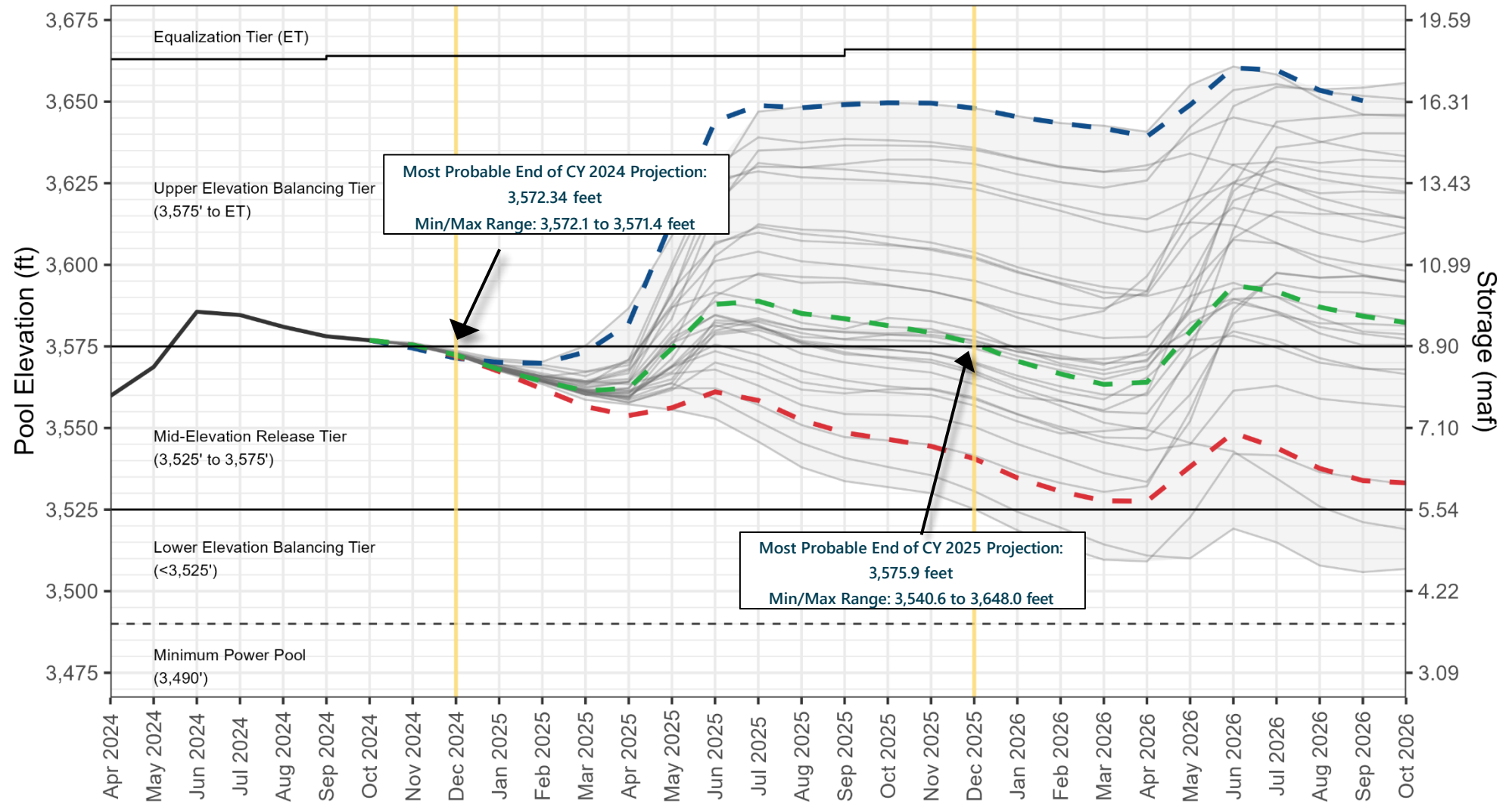
Water Year 2025 Forecast (issued November 1)

Comparison with History



Lake Powell End-of-Month Elevations

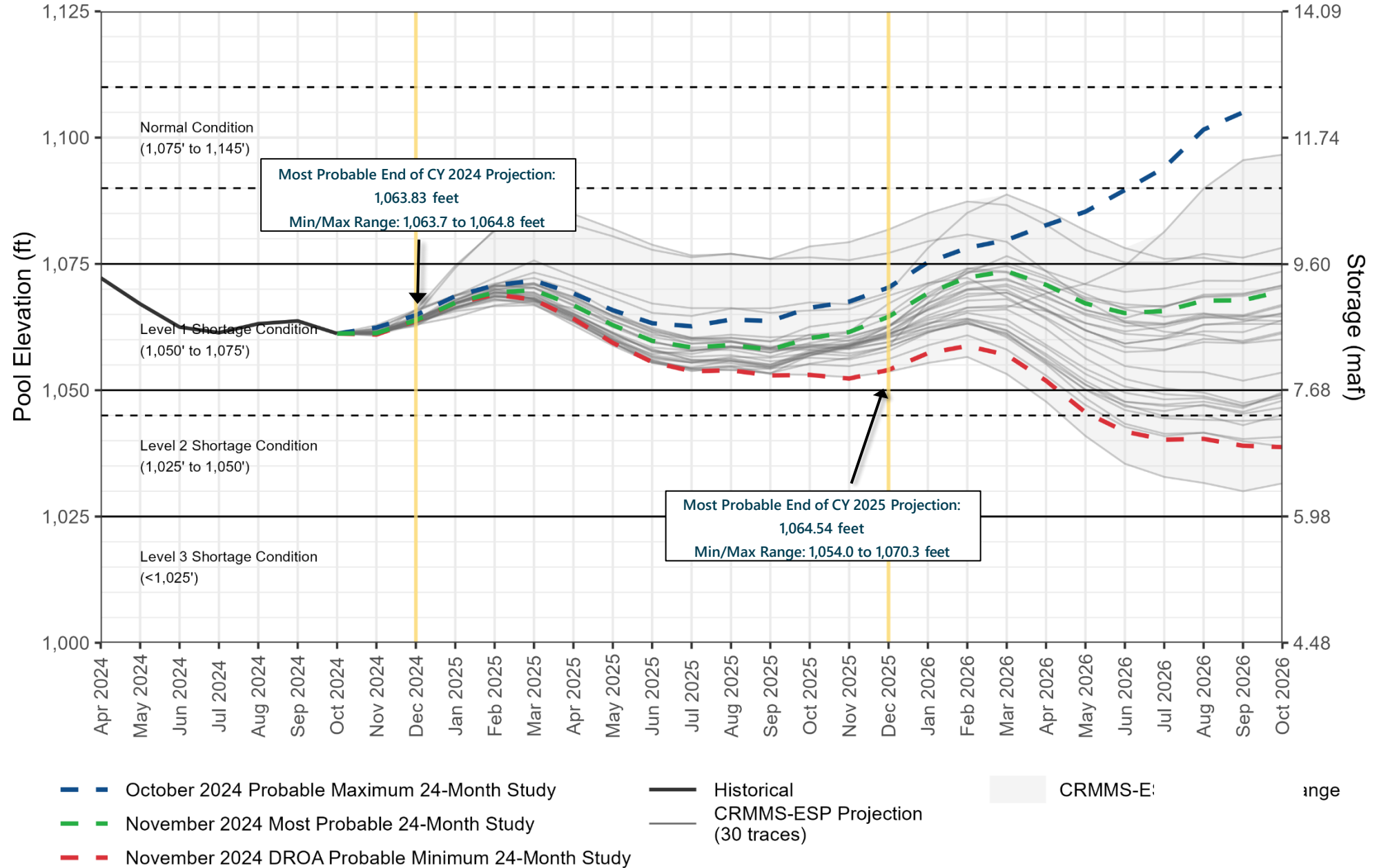
CRMMS Projections from October and November 2024



- October 2024 Probable Maximum 24-Month Study
- November 2024 Most Probable 24-Month Study
- November 2024 DROA Probable Minimum 24-Month Study
- Historical
- CRMMS-ESP Projection (30 traces)
- CRMMS-ESP Projections Range

Lake Mead End-of-Month Elevations

CRMMS Projections from October and November 2024



Questions?

Kristen Johnson

Phone: (602) 771-8552

Email: kjohnson@azwater.gov

Website: azwater.gov

Colorado River Conditions:

<https://www.azwater.gov/crm/dashboard>

